



**SECURIFORT**  
INC



- ◆ Exceed UL standards
- ◆ First choice of the banker and jeweller
- ◆ Result of 38 years in research evolution
- ◆ The quintessence in burglary protection against torch & tool
- ◆ Burglary barrier developed over 38 years of experience in banking protection

SECURITY

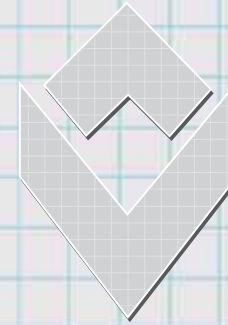
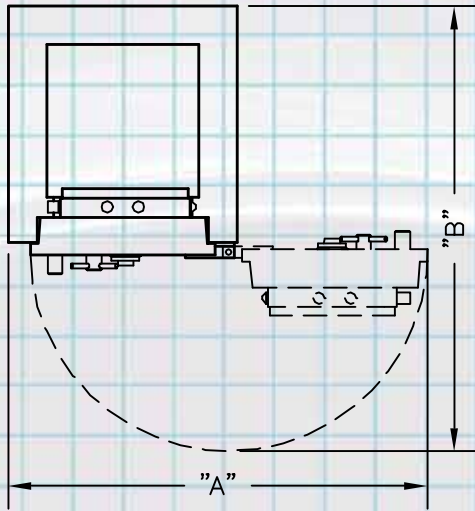


LISTED



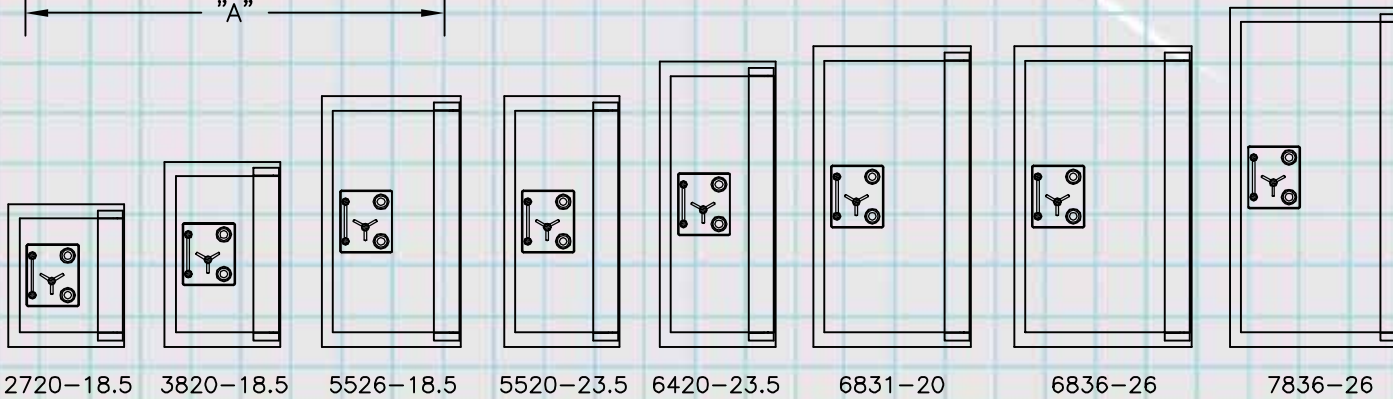
**UL Torch & Tool  
resistant safe  
TRTL-30x6**

**PC 558 R1**



**SECURIFORT**  
INC

*TORCH & TOOL  
RESISTANT SAFE  
TRTL - 30X6*



MODELS	DOOR SWING DIMENSIONS	
	"A"	"B"
2720-18.5	54 7/8"	58 1/4"
3820-18.5	54 7/8"	58 1/4"
5526-18.5	66 7/8"	64 1/4"
5520-23.5	54 7/8"	63 1/4"
6420-23.5	54 7/8"	63 1/4"
6831-20	76 7/8"	70 3/4"
6836-26	86 7/8"	81 3/4"
7836-26	86 7/8"	81 3/4"

MODELS	INSIDE DIMENSIONS			OUTSIDE DIMENSIONS			CLEAR OPEN		OVERALL DEPTH	Cubic ft. Capacity	WEIGHT	SHELVES QTY
	HEIGHT	WIDTH	DEPTH	HEIGHT	WIDTH	DEPTH	HEIGHT	WIDTH				
2720-18.5	27"	20"	18 1/2"	37"	30"	31"	25"	18"	35 1/8"	5,78	2340 lbs	2
3820-18.5	38"	20"	18 1/2"	48"	30"	31"	36"	18"	35 1/8"	8,13	2870 lbs	3
5526-18.5	55"	26"	18 1/2"	65"	36"	31"	53"	24"	35 1/8"	15,30	4200 lbs	4
5520-23.5	55"	20"	23 1/2"	65"	30"	36"	53"	18"	40 1/8"	14,95	4100 lbs	4
6420-23.5	64"	20"	23 1/2"	74"	30"	36"	62"	18"	40 1/8"	17,40	4575 lbs	5
6831-20	68"	31"	20"	78"	41"	32 1/2"	66"	29"	36 5/8"	24,39	5500 lbs	5
6836-26	68"	36"	26"	78"	46"	38 1/2"	66"	34"	42 5/8"	36,83	6485 lbs	5
7836-26	78"	36"	26"	88"	46"	38 1/2"	76"	34"	42 5/8"	42,25	7420 lbs	6

**PC-558-R1**

[www.securifort.com](http://www.securifort.com)