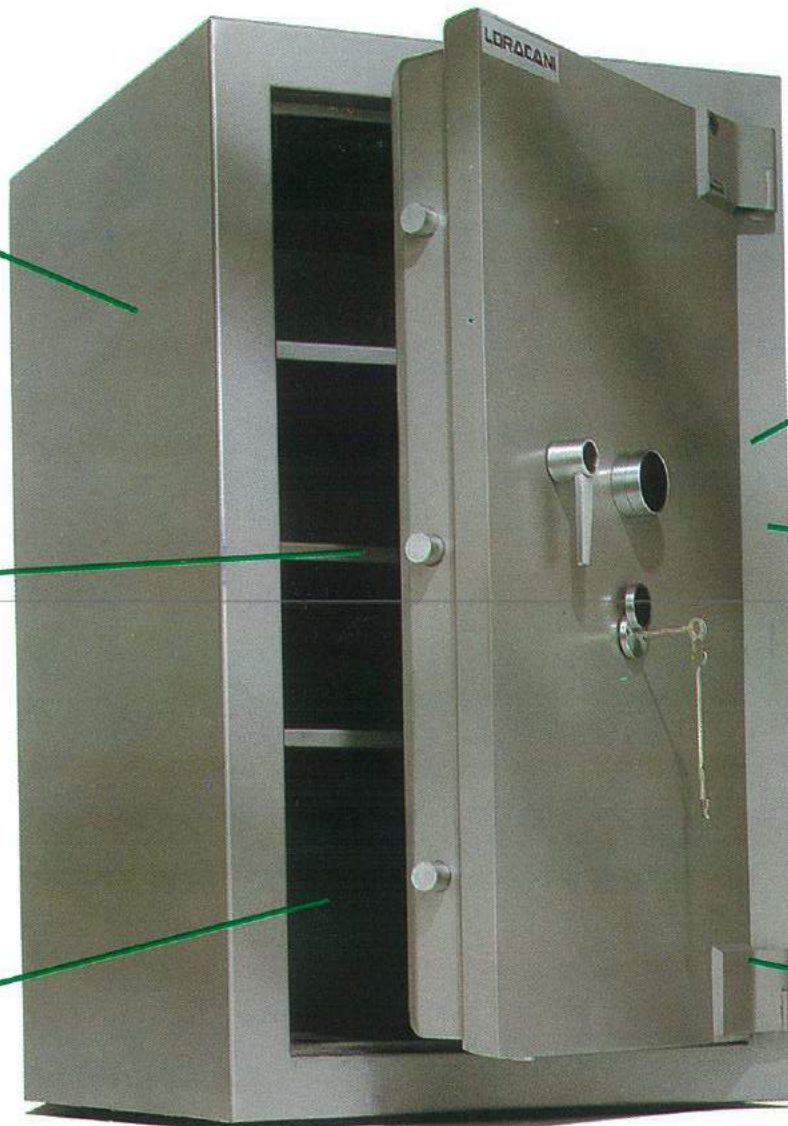


MUTUAL

Body: Double layer seimans steel filled with a 3" inner layer of tough 8000 PSI high density concrete embodied with corundum aggregate.

Bolts: Massive 1¼" locking bolts.

Interior: Totally adjustable shelves at ½" increments. Drawers optional.



Lock:

Dependable U.L. Group 2 combination locks protected by LaGard ball bearing mount plate. The 7 lever key lock protected by tempered glass plate.

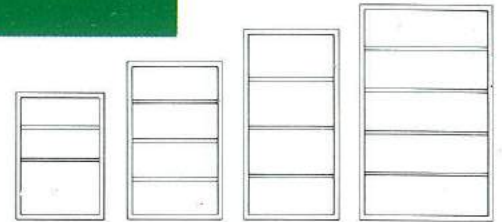
Relockers: Incorporated to trigger dual passive relockers in addition to a lock case relocker.

Hinges: Heavy duty, wrap around locks secured with independent fixed locking bolts.

The LORACANI TL-30

Mutual proudly introduces another fine product in their line of quality safes. Incorporating advanced level security defense systems, this safe is an extension of Mutual's AP/DP series. For those seeking a certified degree of security the Loraconi TL-30 offers a U.L. burglary label and a S.A.B.S. Group 1 one hour fire label.

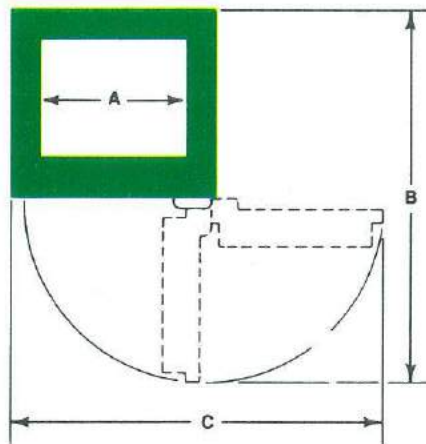
MUTUAL



DIMENSIONS, WEIGHTS AND FEATURES

MODEL	EXTERIOR			INTERIOR			SHELVES/ DRAWERS	CAPACITY CU. FT.	WEIGHT (LBS)
	H	W	D	H	W	D			
LP5/30	39½	27½	27½	32½	20½	21	2/0	8.1	1480
LP6/30	49	29½	29½	42	23	21	3/0	11.74	2040
LP7/30	59	29½	29½	52	23	21	3/0	14.53	2460
LP8/30	67	41½	28	60	34½	20	4/0	24.00	3240

**Add 1½" to depth for handles and hinges



DOOR SWING PROJECTIONS

DOOR SWING DIMENSIONS

MODEL	A	B	C
LP5/30	21½	51 ⁷ / ₈	49¾
LP6/30	23	53½	51½
LP7/30	23	53½	51½
LP8/30	34½	65½	76½



Lab tested at 1760°F
for one hour—S.A.B.S.
Group 1.

