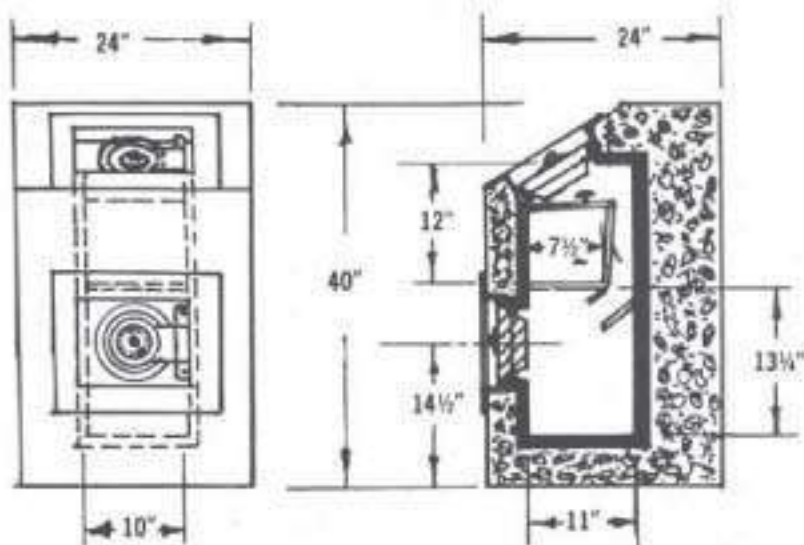


MAJOR

DEPOSITORY MODEL D-3000

"ER" RATED



INSURANCE—"ER" rated, plus 10% for U.L. Relocking Device Label.

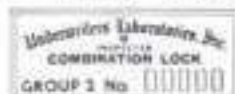
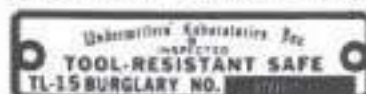
2 COMPARTMENT DEPOSITORY

OFTEN used for under counter installation—access to the change compartment and deposit chute is from top door—deposit chute approximately 2" wide—protected with 3 saw toothed baffles.

- **2 DOORS**—8" in diameter—6 7/8" clear door opening.
- **DOORS**—chrome plated 1 1/2" thick steel, equipped with hard plate to prevent drilling.
- **LOCK**—Underwriters TL-15 Label—parts all treated against corrosion.
- **EXTERIOR FINISH**—Major grey.
- **INTERIOR**—12 Gauge Steel Cladding filled with concrete provides maximum protection against carry-off or fire.
- **SHIPPING WEIGHT**—Filled—approximately 2,000 lbs.
- **EMPTY**—790 Lbs.
- **OPTIONAL EQUIPMENT**—added cost—
 - Key Lock Dial
 - Anchor Bolts
 - Special Interiors



LOOK FOR THESE LABELS — THEY INSURE YOU TOP SECURITY



The Criterion of Quality... **MAJOR SAFES** ... Los Angeles, Calif. 90023

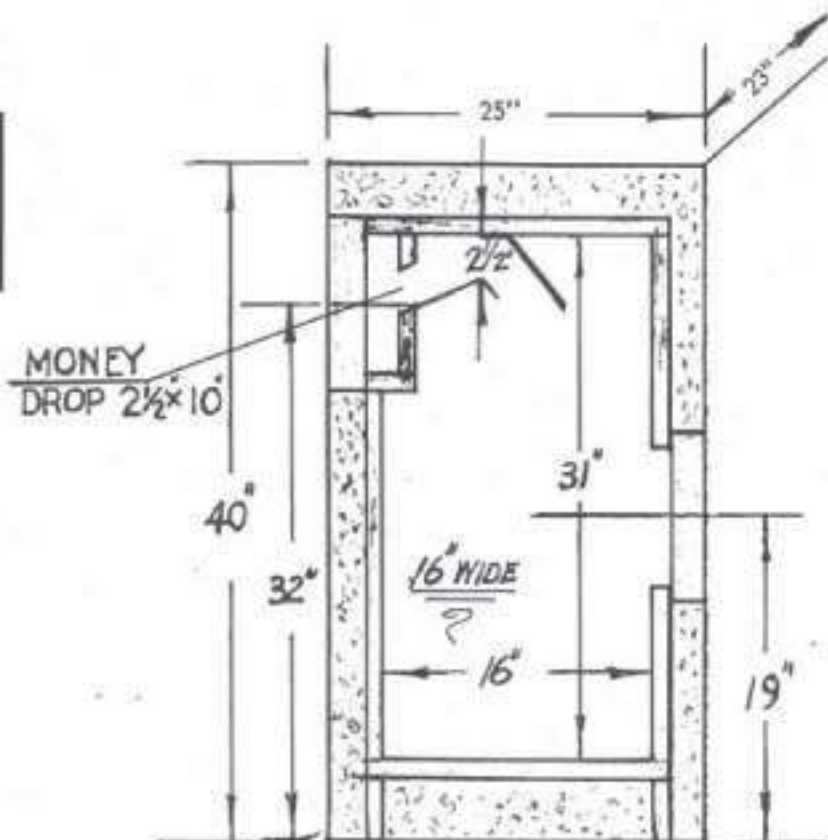
MAJOR

DEPOSITORY MODEL D-7900

"ER" RATED



MODEL D-7900



- **INSURANCE**—"ER" Rated plus underwriter's Relocking Device label.
- **2 - 8-inch Door Inexpensive Depository**—large 7936 cu. in. capacity.
- **LOCK**—Underwriters Lab. Group 2 combination lock label.
- **DOORS**—chrome plated, jeweled and equipped with a hard plate to prevent drilling.
- **EXTERIOR**—Major Grey.
Lock PARTS all treated to prevent corrosion.

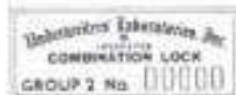
Approximate Shipping Weights

Empty — 890 lbs.

Filled — 2050 lbs.

7936 Cu. In. Capacity

LOOK FOR THESE LABELS — THEY INSURE YOU TOP SECURITY

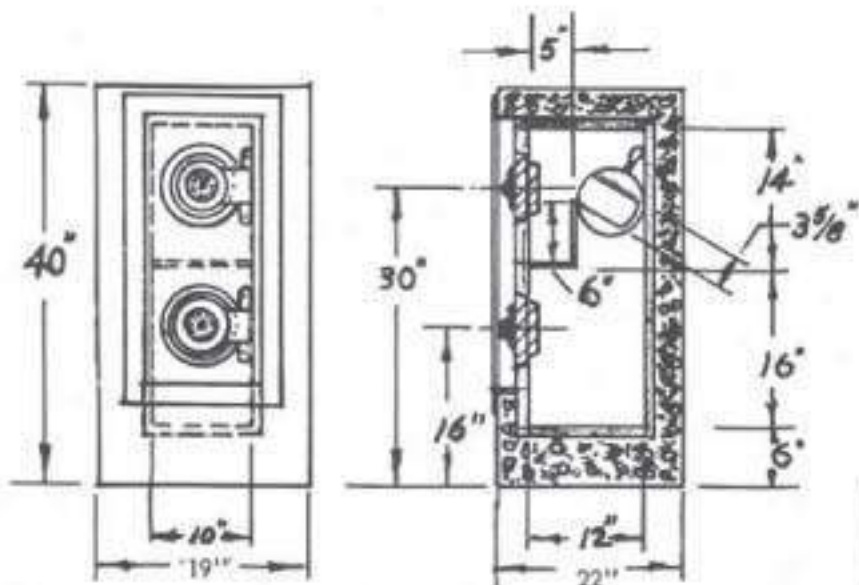


The Criterion of Quality . . . **MAJOR SAFES** . . . Los Angeles, Calif. 90023

MAJOR

**DEPOSITORY
MODEL D-3500**

"ER" RATED



Clear Door Opening 6 3/4"

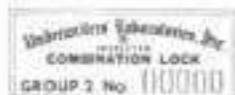
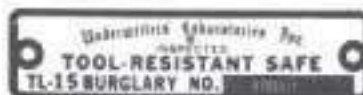
MODERATELY PRICED TWO-COMPARTMENT UNIT

- **TOP DOOR** gives access to rotary fish-proof hopper—takes packages 8 3/4" x 3" x 5 3/4"—by rotating hopper forward the deposit falls into lower compartment—the top door also gives access to change compartment 10" x 6" x 5".
- **INSURANCE**—"ER" rated, plus 10% relock label.
- **THE LOWER COMPARTMENT** will accommodate a substantial number of deposits.
- **DOORS**—2 chrome plated equipped with hard plate to prevent drilling. 1 1/2" thick—8" diameter.
- **LOCK**—Underwriters Group 2—Combination lock label all lock parts treated to prevent corrosion.
- **BODY**—1" electrically welded carbon steel.
- **FINISH**—Exterior—Major grey.
- **OPTIONAL EQUIPMENT**—at added cost

Key Lock Dial — Anchor Bolts — Special Interiors.

Approximate Shipping Weight — Filled 1860 Lbs. — Empty 912 Lbs.

LOOK FOR THESE LABELS — THEY INSURE YOU TOP SECURITY



The Criterion of Quality... **MAJOR SAFES** ... Los Angeles, Calif. 90023

MAJOR

BOWLING ALLEY DEPOSITORY

"ER" RATED



NOTE—
HOPPER
DOOR REVERSED,
OR ALL
THREE DOORS
MAY FACE
FRONT.
SEE CUT
BELOW

MAJOR SAFE DEPOSITORY

3-Door Depository—TOP DOOR 7 $\frac{3}{4}$ " Diameter ROTARY HOPPER, 2 lower doors 10" Diameter Clear Door Opening 9 $\frac{1}{2}$ ". BOTTOM COMPARTMENT for storage. HOPPER DOOR can be installed in back or as desired. Hopper will receive packages—10 $\frac{3}{4}$ " x 4 $\frac{1}{2}$ " x 7".

INSURANCE—"ER" rated, plus 10% reduction of premium for relocking device label.

DOORS—chrome plated, 1 $\frac{1}{2}$ " thick—hard plate to prevent drilling.

BODY—constructed of electrically welded steel.

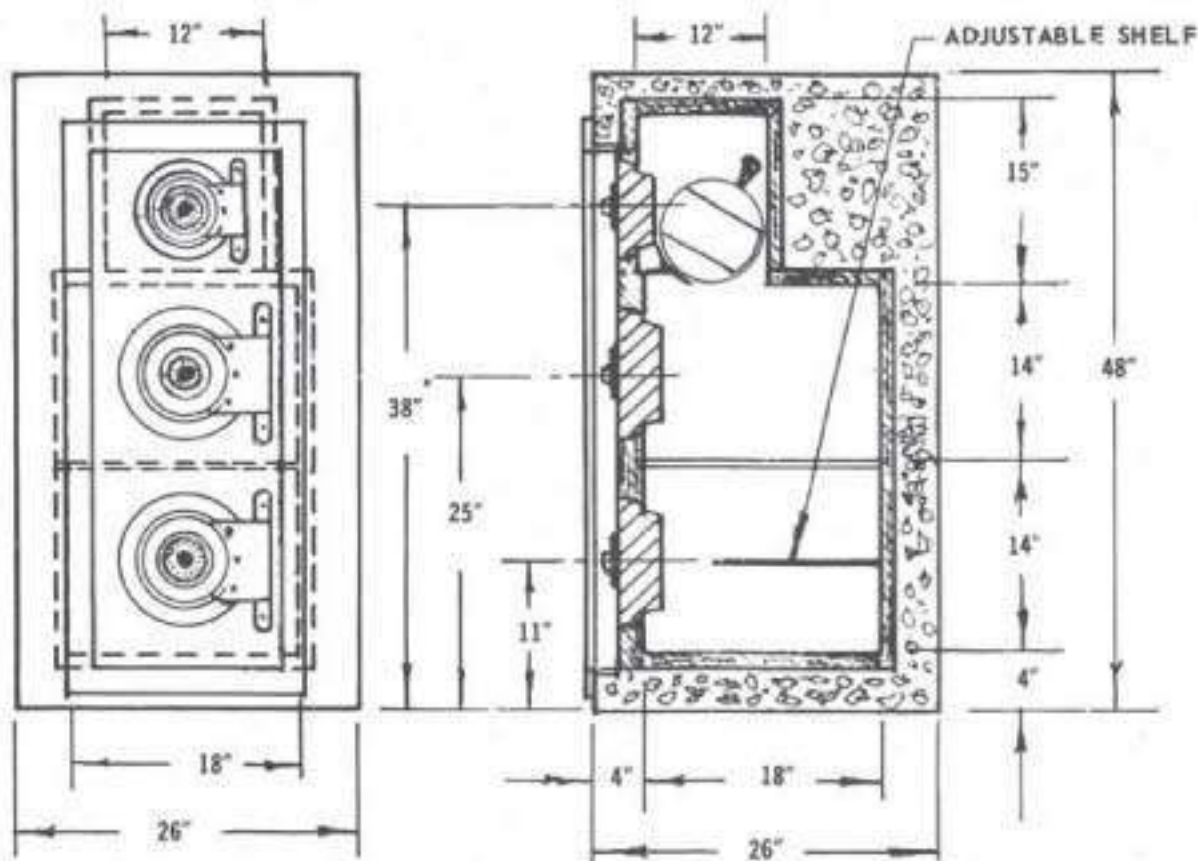
LOCK—1,000,000 combination change—U.L. Group 2 lock label.

ALL PARTS—treated against corrosion.

EXTERIOR—finish Standard Major grey.

OPTIONAL EQUIPMENT—at added cost. Key Lock Dial—Anchor Bolts—Special interiors.

SHIPPING WEIGHT—Empty, 2000 lbs.—filled 4800 lbs.



The Criterion of Quality.... **MAJOR SAFES** Los Angeles, Calif. 90023

MAJOR

ER - RATED DEPOSITORY

MAJOR SAFE DEPOSITORY SPECIFICATIONS

Our all-around proven two-compartment Depository units.

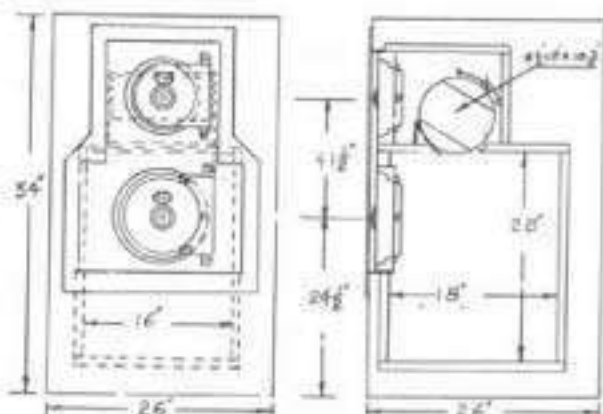
DOORS—Chrome plated, 1½" thick steel—hard plate to prevent drilling.

TOP DOOR gives access to rotary fishproof hopper—will receive packages 10¼" long x 4½" wide x 7" deep—by rotating hopper forward packages fall into lower compartment. (Top door also gives access to money compartment for change, on Model D8000 only.)

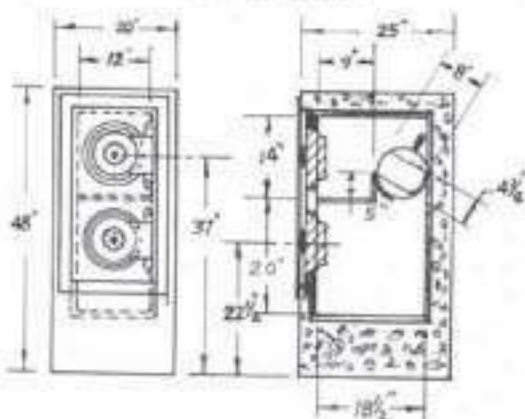
LOWER COMPARTMENT will accommodate a substantial number of packages. **BOTH DOORS FORWARD OR REVERSED.**

HOPPER—rotates on ball bearings.

MODEL NO. D11000



MODEL NO. D8000



KEY LOCK
DIAL
EXTRA
CHARGE



LOCK—Major 1,000,000 change combination—U.L. Group 2 label.

INSURANCE—"ER" rated plus 10% for group one relock label.

ALL PARTS treated against corrosion.

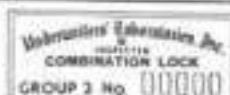
EXTERIOR FINISH—Major Grey.

OPTIONAL EQUIPMENT—AT ADDED COST—

- Key Lock Dial
- Anchor Bolts
- Special Interiors

DIMENSIONS

MODEL NO.	OUTSIDE			UPPER DEPOSIT SECTION				LOWER COLLECTION SECTION				CUBIC INCH CAPACITY	SHIPPING WEIGHTS
	High	Wide	Deep	High	Wide	Deep	Clear Door Opening	High	Wide	Deep	Clear Door Opening		
D8000	48"	20"	25"	14"	12"	18½"	9½"	20"	12"	18½"	Top 9½" Lower 9½"	4440	1100 EMPTY 2300 FILLED
D11000	54"	26"	26"	14"	12"	15½"	9½"	28"	16"	18"	Top 9½" Lower 12"	8164	1300 EMPTY 2800 FILLED

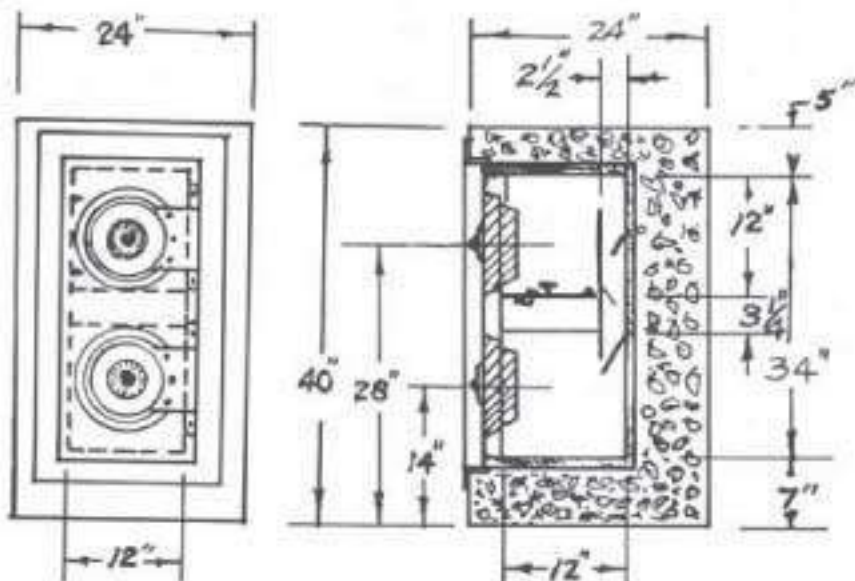


The Criterion of Quality... **MAJOR SAFES** ... Los Angeles, Calif. 90023

MAJOR

DEPOSITORY MODEL D-9000

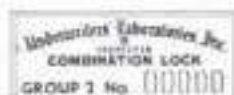
"ER" RATED



- SPECIFY if both doors forward or reversed (optional).

MAJOR SAFE DEPOSITORY

- INSURANCE—"ER" rated, plus 10% reduction of premium for group 1 relocking device.
- DOOR—chrome plated—1 1/2" thick—hard plate to prevent drilling—CLEAR DOOR OPENING 9 1/2".
- BODY—constructed of 1" electrically welded steel.
- TWO COMPARTMENTS—top working compartment and lower deposit or collecting compartment reduce the risk from armed robbery or burglary attack.
- MANAGER'S COMPARTMENT—located across the full 12" width in the bottom of the top compartment, is protected by a key locked hinged door.
- DEPOSIT CHUTE—with the opening located high and to the rear is protected by 3 fixed and one hinged baffle—make overflow and fishing extremely improbable.
- ALL PARTS—treated against corrosion.
- FINISH—Exterior, standard Major grey.
- SHIPPING WEIGHT (approximately):
Empty, 1120 lbs. — Filled, 2370 lbs.



The Criterion of Quality... **MAJOR SAFES** ... Los Angeles, Calif. 90023