

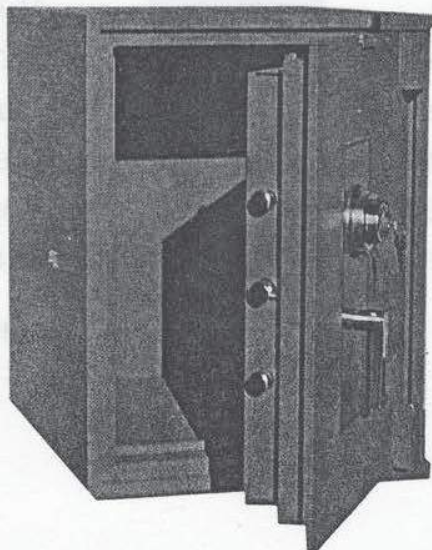
# KNIGHT "IMC" INSULATED MONEY CHEST

**2 HOUR FIRE PROTECTION — UNDERWRITERS TL-30 CLASS "F"  
MERCANTILE & BROADFORM — BANK RATING "G"**

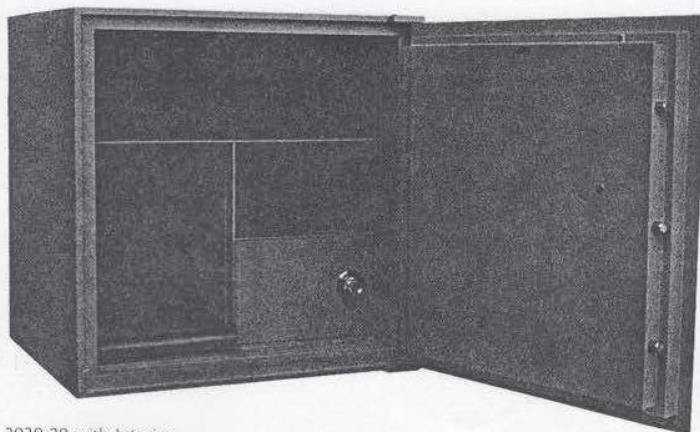
The Knight Safe TL-30 "IMC" is the highest state of the arts currently available in Underwriters TL-30 money safes. They combine TL-30, Class "F", burglary protection with a unique form of fire protection developed for the space industry.

The insulating material is in **dry** form and is laminated inside the body and door of the safe. This material has been certified by its manufacturer at 2300° for a period of two (2) hours.

These safes have been tested in local laboratories using the Underwriters Laboratory guidelines for a period of two hours with no damage to the contents. Because of the construction characteristics and properties of the materials used, there is no damage by moisture. This feature is markedly different from safes already on the market using the old form of concrete protection. **See reverse for standard sizes.**



2216-16



3030-20 with Interior

## CONSTRUCTION CHARACTERISTICS

- A space age DRY insulating material with U.S. Govt. Milspec laminated on all six sides and manufacture rating at 2300° for two hours.
- No rust or moisture problems EVER.
- 1½" thick walls — 2" thick door with exclusive 3-way bolt system.
- Tested in and independent laboratory using Underwriters' Guidelines.
- Group II Underwriters approved lock and separate relocking device.
- Spyproof keylocking dial.
- Bolt detent to eliminate damage to locking bolts.
- The country's finest drill resistant hard plate protecting the lock and EACH locking bolt.
- All doors removeable and adjustable when open.
- Five or more one inch chrome locking bolts.
- Continuous locking bar on hinge side.
- 1½ inch laminated door with full face hard plate.
- ½ inch overlap of safe door to resist hydraulic spreading.
- Hard plate protecting lock is Xray proof, radiographic proof, drill resistant and punch resistant.
- 3-way bolt system on all models 22" H or larger.
- Full door backcovers.
- Bottom of all safes treated with Zinc Chromate to prevent rust.
- All safes painted with Polane® Polyurethane Enamel to give them superior appearance and durability.
- Wide range of optional interiors, timelocks, time delays, and claddings available.
- All safes carry full one year warranty.

**BUY AMERICAN**

### STANDARD SIZES

Model	Inside			Outside			Clear Door Opening		Capacity Cubic In.	Weight Lbs.
	H	W	D	H	W	D*	H	W		
2216	22	16	16	25	19	22	21	15	5,632	875
2424	24	24	20	27	27	26	23	23	11,520	1,290
3020	30	20	20	33	23	26	29	19	12,000	1,300
3024	30	24	20	33	27	26	29	23	14,400	1,400
3030	30	30	20	33	33	26	29	29	18,000	1,550
3624	36	24	20	39	27	26	35	23	17,280	1,600
4034	40	34	26	43	37	32	39	33	35,360	2,500
5024	50	24	20	53	27	26	49	23	24,000	1,900
5034	50	34	26	53	37	32	49	33	44,200	2,900
6034	60	34	26	63	37	32	59	33	53,040	3,325
7234	72	34	26	75	37	32	71	33	63,648	3,850
8234	82	34	26	85	37	32	81	33	72,488	4,300

\*Add 2 inches to Depth for dial and handle