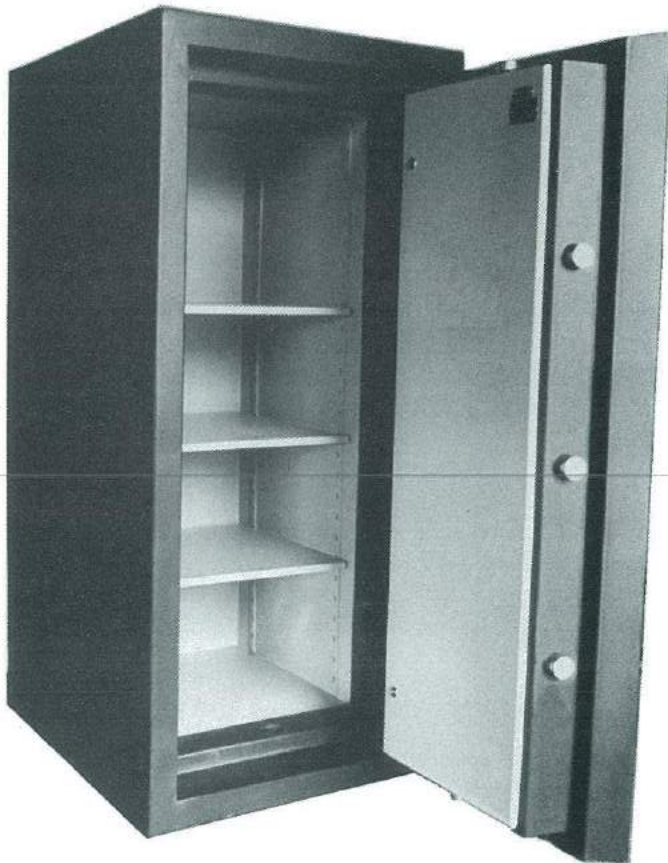




SPARTAN 2000

S.P.G. A VOLTA GROUP COMPANY

Price Busting New Generation TL-30

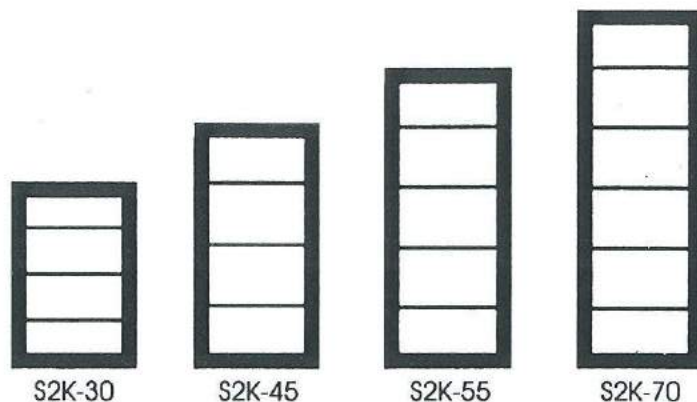


ISM™, *imitated* by many,
DUPLICATED by **NONE**.

All **ISM** Safes are Underwriters
Laboratories (UL®) approved.



**“WE DON'T JUST
MEET THE
STANDARDS,
WE CREATE THEM.”**



MODEL	INSIDE DIMENSIONS (INCHES)			OUTSIDE DIMENSIONS (INCHES)			CAPACITY CU FT	WEIGHT** LBS.	SHELVES QTY
	HEIGHT	WIDTH	DEPTH	HEIGHT	WIDTH	DEPTH*			
S2K-30	30	21	20	36.5	27.5	28.5	7.3	1610	3
S2K-45	45	21	20	51.5	27.5	28.5	11	2090	4
S2K-55	55	21	20	61.5	27.5	28.5	13.4	2420	5
S2K-70	70	27	20	76.5	33	28.5	21.9	3190	6

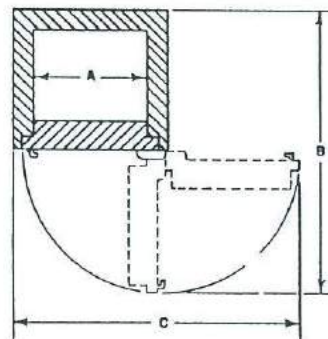
*Add 65mm to outside depth for handle and hinges

**Door weighs 19% of total

Features:

- Fire resistant to one hour
- Three-way boltwork with 8 nickel plated bolts
- CS-650 monolith door 5" total thickness
- Hard Plate protection in door
- 3.25" thick CS-650 monolith body
- One La Gard 6850 combination lock with drill resistant plate protection
- Live relocking device
- Three spoke bolt-opening and pull handle
- Adjustable shelves
- Alarm ready

DOOR SWING PROJECTIONS



DOOR SWING DIMENSIONS (INCHES)

MODEL	A	B	C
S2K-30	21	54	50.6
S2K-45	21	54	50.6
S2K-55	21	54	50.6
S2K-70	21	61.3	58

In line with our policy to provide the best in security, ISM reserves the right to incorporate any improvements and alter any specifications without prior notice.