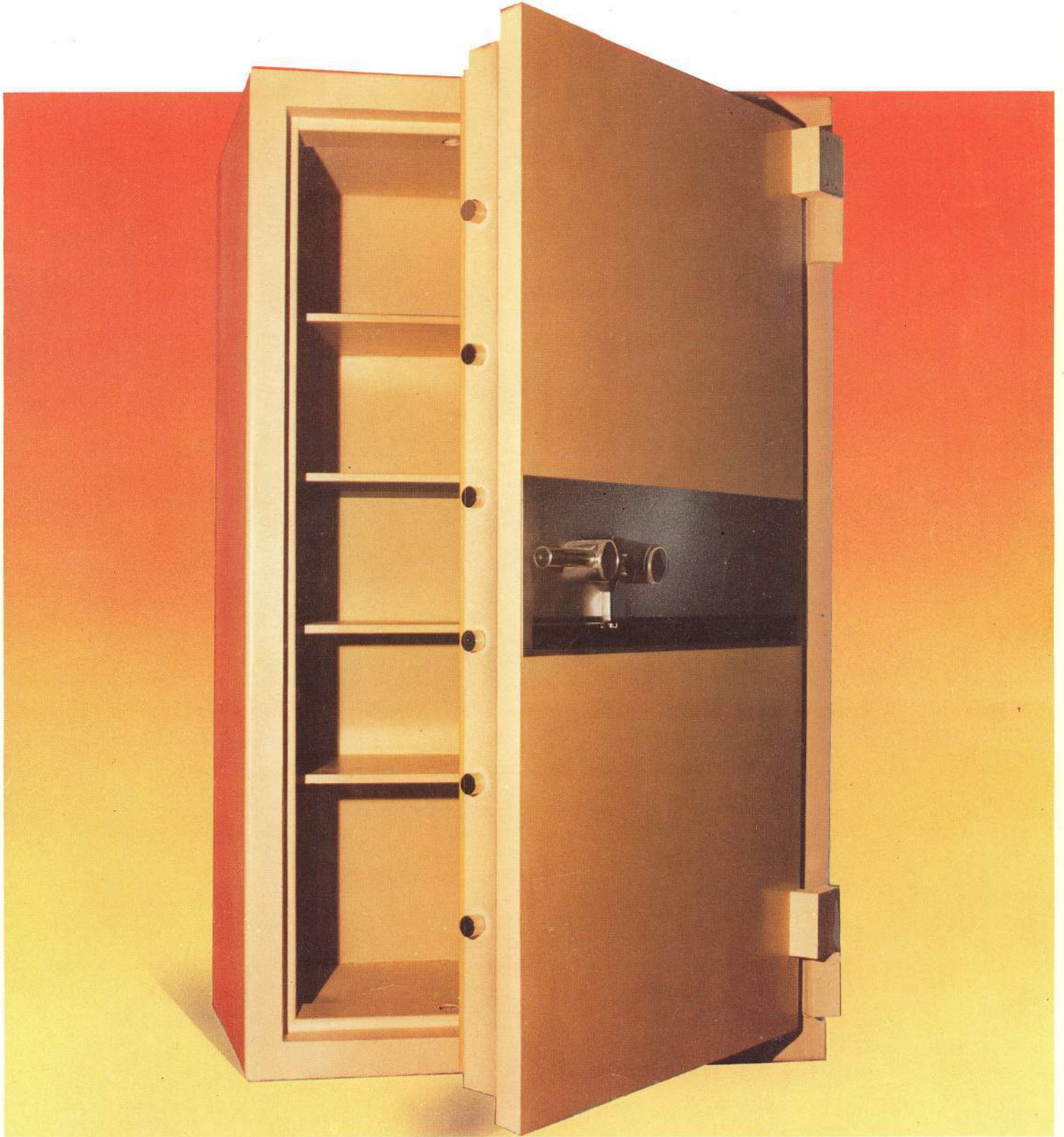


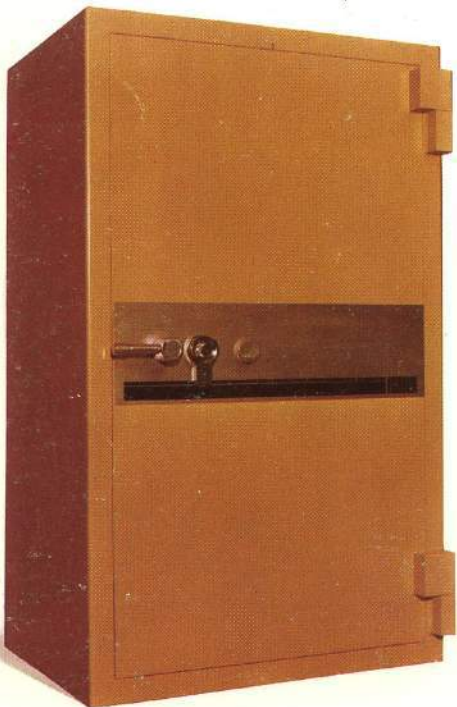
**ISM**

# ISM Jewelers Mk VII Safe



# ISM Jewelers Mk VII

The Jewelers Mk VII was designed to offer sophisticated protection against all forms of physical and thermic attack. ISM has incorporated in this safe superior composite materials and a unique locking mechanism to produce a high security safe with superb six-sided burglary resistant properties.



## Door

The overall thickness of the Jewelers Mk VII door is 150 mm (6"). It is constructed of outer and inner steel plates of 10 mm (0.4") thickness each electrically welded together and enclosing a 30 mm (1.2") thick casting of C.N.A. ISM's superior torch and drill resistant composite material. The C.N.A. was developed by ISM to withstand all forms of attack by force, drills, and oxy-acetylene cutters. It consists of a tough thermal resistant cast alloy within which a consistently staggered drill resistant alloy multi-grid is incorporated, covering the whole area of the door.

## Body

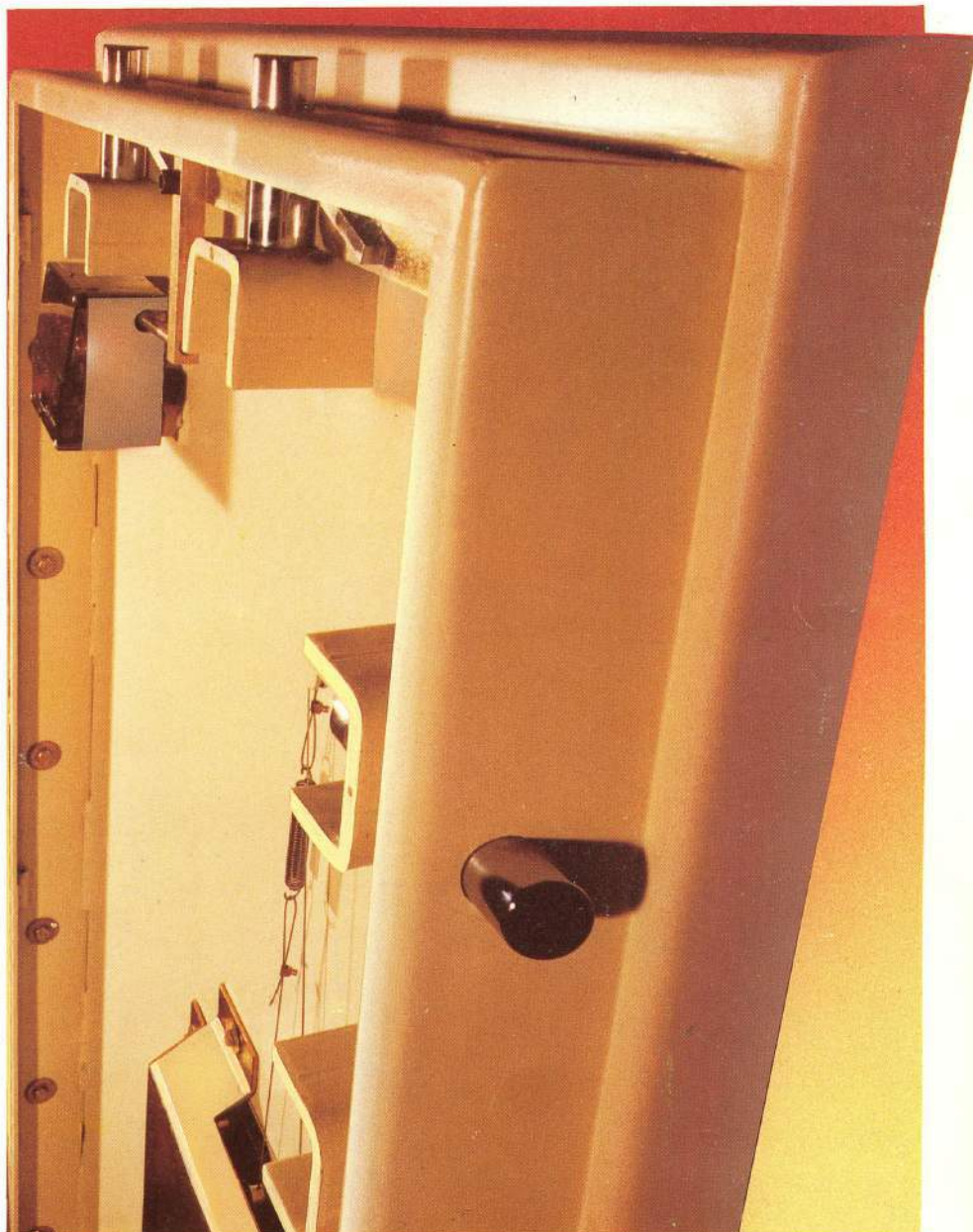
The ISM Jewelers Mk VII body features a 25 mm (1") thick casting of C.N.A. ISM's superior torch and drill resistant composite material. In addition is a 30 mm (1.2") thick layer of ISM's CS-300 Monolith reinforced with a steel grid. Thus bringing the total thickness of the body to 75 mm (3"). Together these materials, encased inside and out with steel plates that are electrically welded, form a unit highly resistant to attack by drills and thermic cutting tools.

## Boltwork and Locking Mechanism

The ISM Jewelers Mk VII is equipped with a three way active boltwork of a unique design which provides the bolts an independent form of protection against not only explosive attack but also from concentrated tool attacks from all directions. The bolts are 30 mm (1.2") in diameter of high-strength steel and are nickel plated. By turning the handle to the locking position the bolts are extended by a sliding mechanism which moves perpendicularly to the bolts thus providing a positive defense barrier against bolt attack. The bolts in the locking position are each extended into their C.N.A. chamber which ensures complete solidarity with the body.

## Relocking Mechanism

The locks and vital mechanism areas are protected against tool, torch, or explosive attacks by a tempered glass plate. The glass if attacked will shatter into pieces, thus activating the random relockers. In addition two live relockers are activated if the locks are attacked. All the relockers have cross locking pins which will not allow them to be withdrawn after being activated.



## Locks

The ISM Jewelers Mk VII is equipped with a U.L. MP Group 1 maximum security combination lock. A second nine lever double-bit key lock is provided in conjunction with the combination lock. When the door of the safe is closed, it is impossible to remove the key without securing the bolts in the locking position, thus ensuring that even if the combination lock is not engaged, the safe is secure. As an optional extra all models (except the 2416 size) are prepared to accept a three movement 144 hour time-lock that locks the safe independent of any other lock. This prevents holdups after hours.

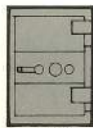
## Interior Fittings

Adjustable/removable shelves are available for setting up the safe interior to accept jewelry trays, cash trays, rolled coins and other valuables.

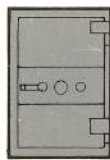
## Finish

A modern anodized aluminum capstan wheel operating handle and facia panel compliment the durable paint finish, standard on all ISM Security Equipment.

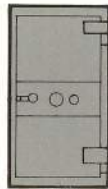
# Dimensions and Weights



2416



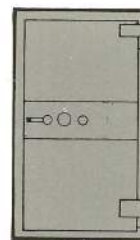
3521



4521



5521

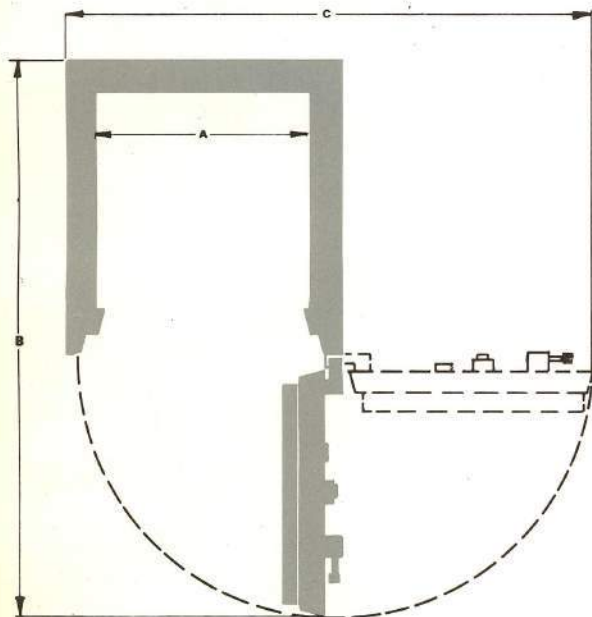


6034

Model	Inside Dimensions (mm/in)			Outside Dimensions (mm/in)			Volume (Lt./Cu.Ft.)	Est. Weight (Kg/Lbs)
	Height	Width	Depth	Height	Width	Depth*		
2416	612 24.1	410 16.14	410 16.14	762 30.00	560 22.04	635 25.0	109 3.63	480 1060
3521	890 35.04	545 21.45	510 20.07	1040 40.94	695 27.36	735 28.93	247 8.73	840 1850
4521	1145 45.07	545 21.45	510 20.07	1295 50.98	695 27.36	735 28.93	318 11.22	1000 2200
5521	1410 55.51	545 21.45	510 20.07	1560 61.41	695 27.36	735 28.93	392 13.82	1170 2580
6034	1530 60.23	865 34.05	510 20.07	1690 66.14	1015 39.96	735 28.93	675 21.02	1630 3600

\* Add 65 mm to outside depth for handle.

## Door Swing Projections



## Door Swing Dimensions

Model	A	B	C
2416	410 16.14	1165 45.87	1070 42.13
3521	545 21.45	1400 55.12	1340 52.76
4521	545 21.45	1400 55.12	1340 52.76
5521	545 21.45	1400 55.12	1340 52.76
6034	865 34.05	1720 67.72	1980 77.95

In line with our policy to provide the best in security, ISM reserves the right to incorporate any improvements and alter any specifications without prior notice.



# EMPIRE SAFE

6 EAST 39th STREET, NEW YORK, N.Y. 10016

**(212) 684-2255**

FAX: (212) 684-5550