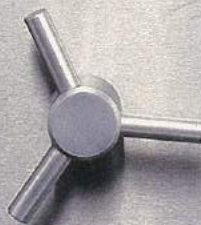


CASH VAULT



ISM

ISM

CashVault TL-30
Six Sided Protection



CashVault TL-30

Six-Sided Protection

ISM is proud to present the CashVault, a third generation Underwriters Laboratories approved TL-30. This safe has been designed to give more protection than any other TL-30 manufactured today. The CashVault offers full six-sided protection against determined burglary attacks, including oxy-acetylene torch attacks. Its unique locking mechanism design is found only in much higher priced safes. In addition, the CashVault is equipped with an Alchronite door. This alloy is standard on all ISM high security safes including the Super-Diamond TXTL-60, the DiamondVault TRTL-30x6, the Treasury TRTL-30x6, the Jewelers TRTL-15x6, and the Jewelguard TL-30.

DOOR

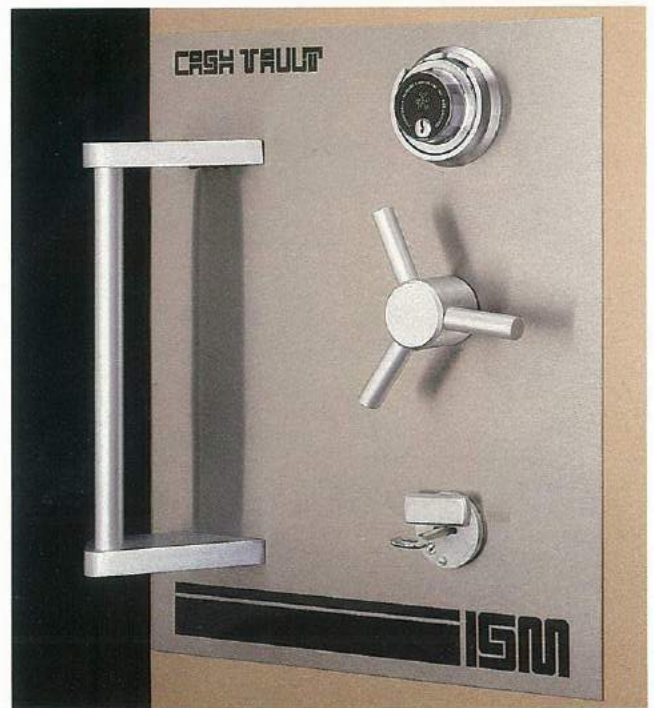
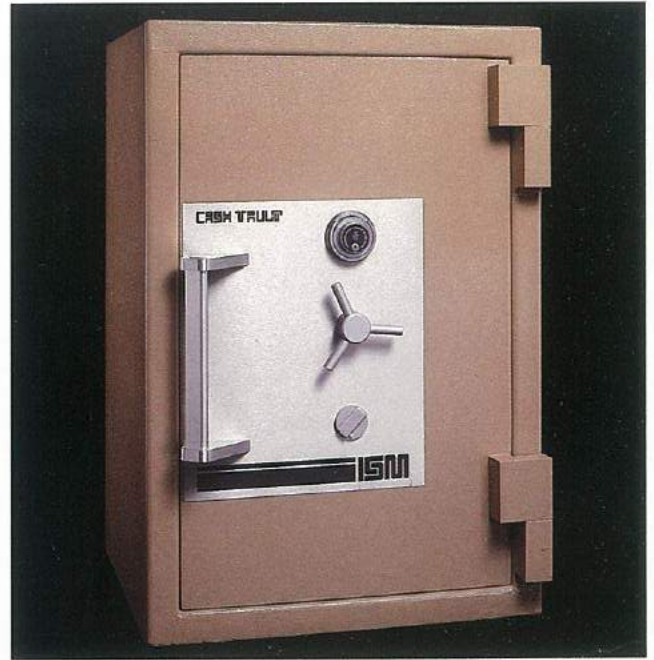
The CashVault door has an overall thickness of 6" (150 mm). It is constructed of outer and inner steel plates electrically welded together enclosing a thick casting of Alchronite, ISM's unique torch and drill resisting barrier defense material. Alchronite is a superior alloy developed to withstand concentrated attacks with the most sophisticated equipment used by burglars today. A highly torch resistant cast alloy surrounds a drill resistant alloy multi-grid, assuring a complete barrier with uniform consistency.

BODY

The CashVault body features a completely tailored one piece casting of ISM's advanced CS-650 monolithic anti-penetration composite material with a thickness of 3 $\frac{3}{4}$ " (95 mm). The CS-650 monolith has a very high density, which is specifically reinforced with anti-penetration alloy grid. The boltwork area is further protected with special alloy inclusions. All this assures a formidable barrier against torch, tool, and drill attacks. The entire body is surrounded by a dense layer of insultex, ISM's superior insulation material to protect the safes' contents against severe fires. The CS-650 monolith is encased in electrically welded steel plates making up an entire body thickness of 4" (100 mm).

LOCKS

The CashVault is equipped with two locks; an Underwriters Laboratories Group I manipulation proof combination lock, and a maximum security nine lever key lock. The combination lock is equipped with a key locking dial. When the door of the safe is closed, it is impossible to remove the key without securing the bolts in the locked position. Even if the combination lock is not engaged, the safe is still secure.





BOLTWORK AND LOCKING MECHANISM

The CashVault is equipped with three way active boltwork, plus an additional double action locking mechanism. By turning the capstan wheel to the locked position, the bolts extend in three (3) directions. Then a second movement engages two (2) internal bolts that cross lock the horizontal bolts. The entire boltwork mechanism is further secured by a bolt detent system, protecting the bolts when the door is open.

RELOCKING MECHANISM

All locks and vital mechanism areas are protected by glass plates. If the door is attacked by tools, torches, or explosives, the glass will shatter activating the relocking mechanism and cross-locking the bolts. Each relocking device is located far from the combination and key lock, and is randomly placed on each safe.

HOLDUP DETERRENT MECHANISM

The CashVault may be equipped, as an optional extra, with a two or three movement 144 hour timelock that locks the safe independent of any other lock. This method of locking prevents holdups after hours. A time delay combination lock is available as an optional extra in place of the key lock. This time delay combination lock can be preset to open the safe in a specified number of minutes during business hours. Signs for both devices are affixed to the outside of the safe.

INTERIOR FITTINGS

Adjustable/removable shelves are available for setting up the safe interior to accept jewelry trays, cash trays, rolled coins, and other valuables.

FINISH

A modern stainless capstan wheel and an anodized aluminum facia panel compliment the durable paint finish, standard on all ISM Security Equipment.

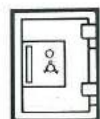
INSURANCE

To achieve immediate access into the United States market, the CashVault was submitted to the Underwriters Laboratories for testing and passed the TL-30 test.

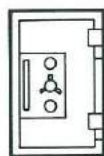
This label should be considered only as a point of departure when considering the superior security offered by this safe. **"WE HAVE DESIGNED AND CONSTRUCTED THE CASHVAULT TO PROTECT THE PRICELESS, NOT JUST TO MEET A STANDARD!"**



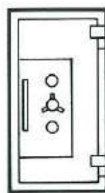
DIMENSIONS AND WEIGHTS



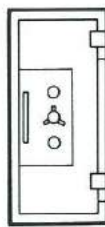
CV 2621



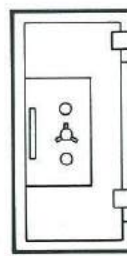
CV 3521



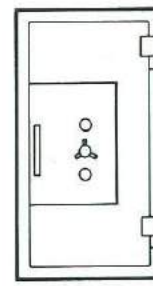
CV 4521



CV 5521



CV 6333



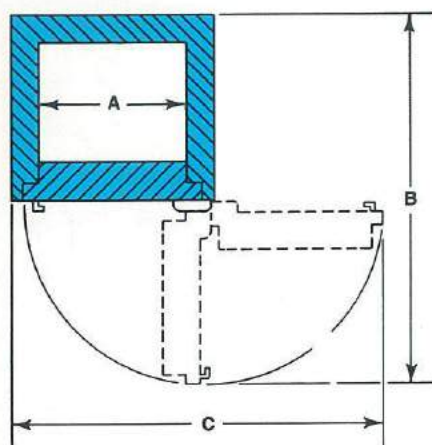
CV 7233

MODEL	INSIDE DIMENSIONS (in/mm)			OUTSIDE DIMENSIONS (in/mm)			CUBIC CAPACITY	DOOR WEIGHT	BODY WEIGHT	APPROX. TOTAL WEIGHT
	HEIGHT	WIDTH	DEPTH	HEIGHT	WIDTH	DEPTH*				
CV 2621	26.0" (.660m)	21.1" (.535m)	16.1" (.410m)	33.9" (.860m)	28.9" (.735m)	26.4" (.670m)	8,833" (5.1 cu./ft.)	375 lbs. (170 kg)	1125 lbs. (510 kg)	1500 lbs. (680 kg)
CV 3521	35.0" (.890m)	21.1" (.535m)	18.1" (.460m)	42.9" (1.090m)	28.9" (.735m)	28.3" (.720m)	13,367" (7.7 cu./ft.)	465 lbs. (211 kg)	1405 lbs. (637 kg)	1870 lbs. (848 kg)
CV 4521	45.1" (1.145m)	21.1" (.535m)	18.1" (.460m)	53.0" (1.345m)	28.9" (.735m)	28.3" (.720m)	17,224" (10.0 cu./ft.)	560 lbs. (254 kg)	1675 lbs. (760 kg)	2235 lbs. (1014 kg)
CV 5521	55.1" (1.400m)	21.1" (.535m)	18.1" (.460m)	63.0" (1.600m)	28.9" (.735m)	28.3" (.720m)	21,043" (12.2 cu./ft.)	660 lbs. (299 kg)	1990 lbs. (903 kg)	2650 lbs. (1202 kg)
CV 6333	63.0" (1.600m)	33.1" (.840m)	18.1" (.460m)	70.9" (1.800m)	40.9" (1.040m)	28.3" (.720m)	37,744" (21.8 cu./ft.)	1035 lbs. (470 kg)	2590 lbs. (1175 kg)	3625 lbs. (1644 kg)
CV 7233	72.0" (1.830m)	33.1" (.840m)	26.0" (.660m)	79.9" (2.030m)	40.9" (1.040m**)	36.2" (.920m**)	61,963" (35.9 cu./ft.)	1250 lbs. (567 kg)	3325 lbs. (1508 kg)	4575 lbs. (2075 kg)

*Add 2½" (65mm) to outside depth for handle.

**Add 3" (76mm) to outside depth for hinges and 1" (22mm) to outside width for hinges for model CV 7233 only.

DOOR SWING PROJECTIONS



DOOR SWING DIMENSIONS

MODEL	A	B	C
CV 2621	21.1" (.535m)	53.0" (1.345m)	53.5" (1.360m)
CV 3521	21.1" (.535m)	54.9" (1.395m)	53.5" (1.360m)
CV 4521	21.1" (.535m)	54.9" (1.395m)	53.5" (1.360m)
CV 5521	21.1" (.535m)	54.9" (1.395m)	53.5" (1.360m)
CV 6333	33.1" (.840m)	67.3" (1.710m)	78.0" (1.980m)
CV 7233	33.1" (.840m)	76.4" (1.940m)	78.9" (2.005m)

In line with our policy to provide the best in security, ISM reserves the right to incorporate any improvements and alter any specifications without prior notice.

ISM

EMPIRE SAFE

6 EAST 39th STREET, NEW YORK, N.Y. 10016

(212) 684-2255

FAX: (212) 684-5550