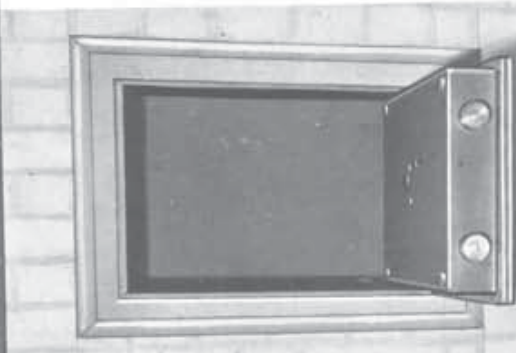
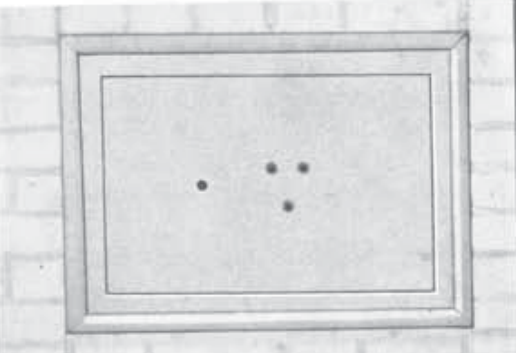




WALL SAFES

05 "WEEK-END" MODEL



Steel door plate 10 mm (3/8") thick plus drill resisting plate.
 All welded steel body fitted with lugs to be firmly embedded into a wall.
 Minimum wall thickness recommended 300 mm (12").

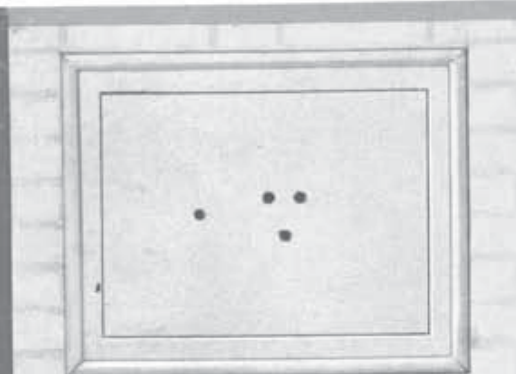
Locking:

Two moving bolts at the front secured by one mono-pole pump lock; one 3 gear combination as standard fitting.

dimensions	HEIGHT	WIDTH	DEPTH
outside	296 mm (11" 3/4)	405 mm (16")	214 mm (8" 1/2)
inside	236 mm (9" 1/4)	345 mm (13" 1/2)	153 mm (6")
weight	22 kg (48 1/2 lb)		

05

07 "HOLIDAY" MODEL



Steel door plate 10 mm (3/8") thick plus drill resisting plate.
 Special component torch and fire resisting designed to delay burglar action with oxy-cutting equipment.
 All welded steel body fitted with lugs to be firmly embedded into a wall.

Minimum wall thickness recommended 400 mm (15" 3/4).

This size is fitted with a removable shelf at half height.

Locking:

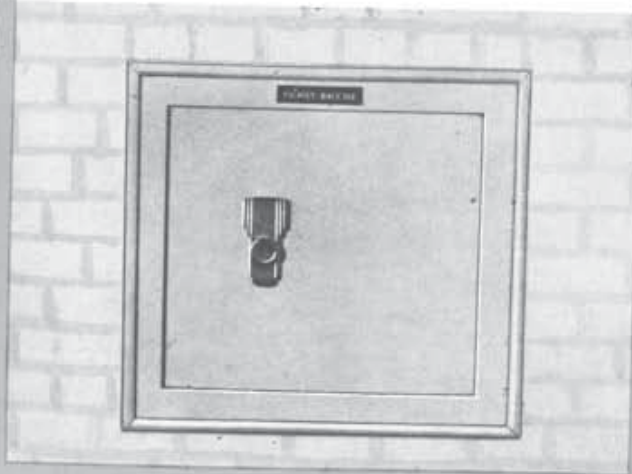
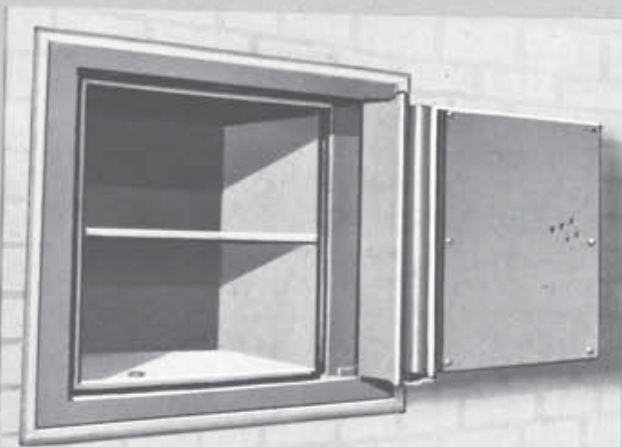
Two moving bolts at the front secured by one "Mono-pole" pump lock; one 3 gear combination as standard fitting.

dimensions	HEIGHT	WIDTH	DEPTH
outside	320 mm (12" 3/4)	405 mm (16")	310 mm (12" 1/4)
inside	260 mm (10" 1/4)	345 mm (13" 1/2)	230 mm (9")
weight	28 kg (62 lb)		

07

HIGH SECURITY WALL SAFE BAR 9

BAR 9



Door presents the same security as the BAR 11 (AT 2) safe model.

1. Armoured steel plate drill and mechanical tools resisting.
2. Extra hard component fire and torch resisting.
3. Special protection plate against calcination.

The door, which has interlocking jamb, may be opened 180° due to the exclusive double pivot action. All welded steel body fitted with lugs to be firmly embedded into a wall.

Total thickness of the door: 120 mm (4"3/4).

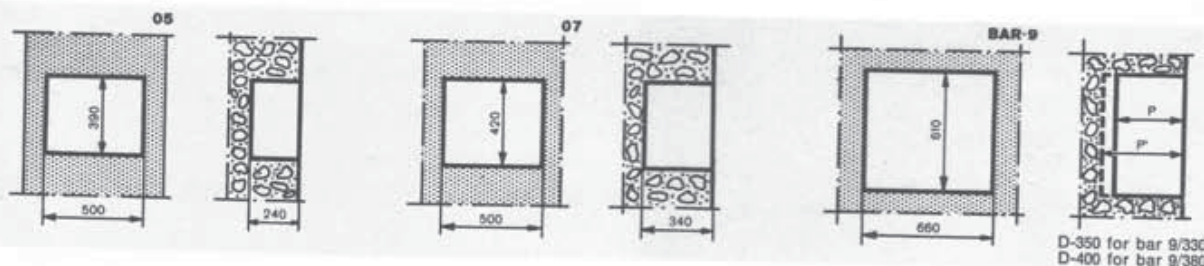
Real defensive thickness: 67 mm (2"5/8).

Locking: Three moving bolts and one continuous dog bolt on hinge side secured by one "Monopole" pump lock and a 4 counter tube combination as standard fitting.

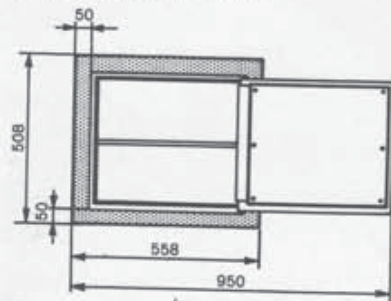
Bar 9 safe is available in two depth:

- Bar 9/330; wall 400 mm (15"3/4),
- Bar 9/380; wall 450 mm (17"3/4).

Dimensions	Height	Width	Depth	Weight
BAR 9/330 outside	508 mm (20")	558 mm (22")	325 mm (12"3/4)	85 kg (188 lb)
Inside	370 mm (14"1/2)	425 mm (16"3/4)	190 mm (7"1/2)	
BAR 9/380 outside	508 mm (20")	558 mm (22")	375 mm (14"3/4)	88 kg (195 lb)
Inside	370 mm (14"1/2)	425 mm (16"3/4)	240 mm (9"1/2)	



Leading dimensions in mm.



Overall dimensions of bar 9 door opened 180°.



FICHET-BAUCHE

Head office: 15-17, avenue Morane-Saulnier
B.P. 11 - 78141 Vélizy-Villacoublay Cedex
Tél. (3) 946.96.44 - Télex 697 389 F

FICHET-BAUCHE (UK) Ltd
22-24, Marlborough Grove, London SE 1 - 5 JT
Tel. (01) 231.11.37, Telex 88.13.213

FICHET-BAUCHE (UK) Ltd
Northern Regional office, 29, Tatton Court
Kingsland Grange, Woolston, Warrington WA1 4 RR
Tel. (0925) 822.116

FICHET-BAUCHE (Ireland) Ltd
Unit 51, Western Industrial Estate
Naas Road, Dublin 12, Tel. (03) 508.016