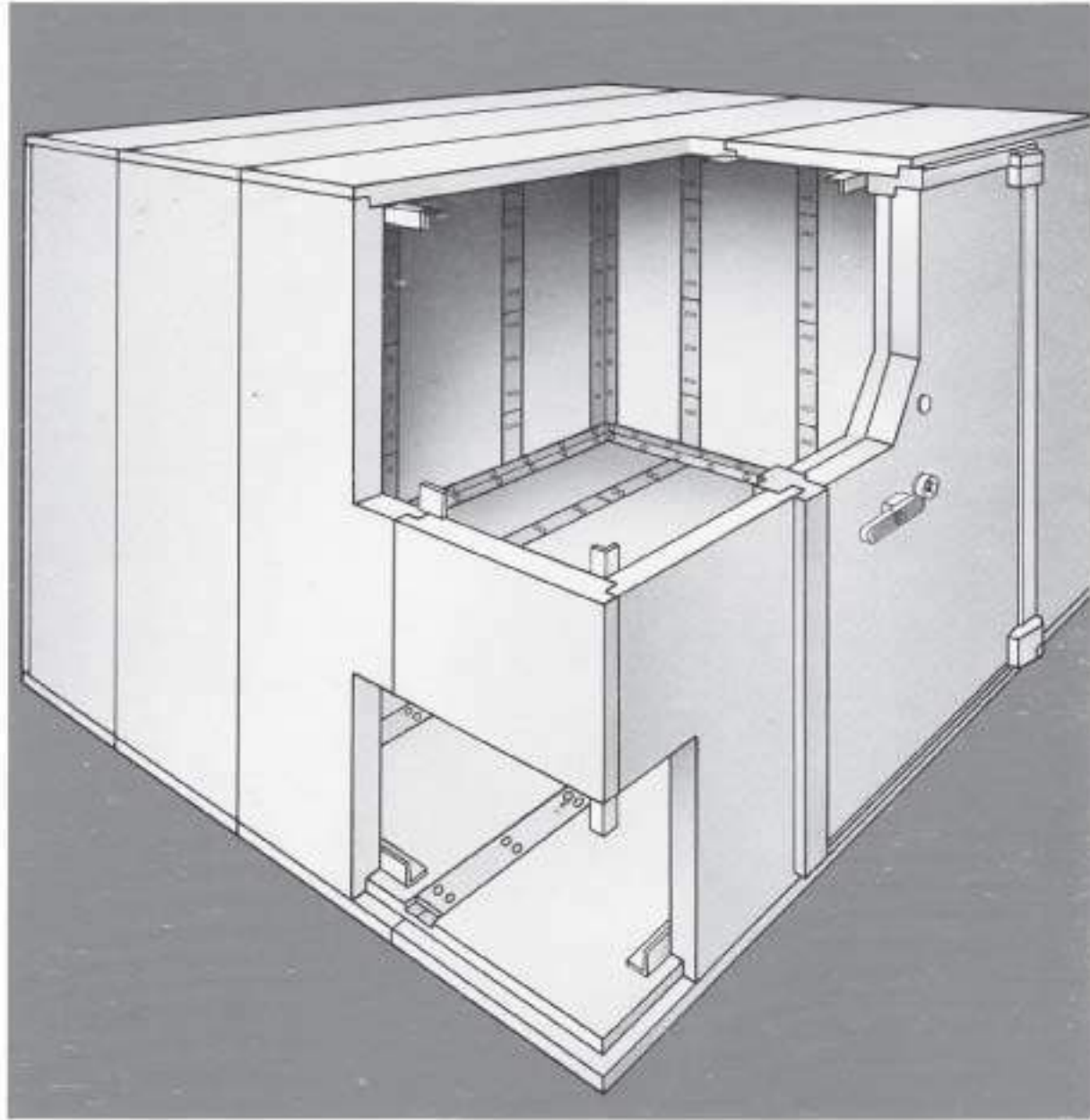


U.L. LISTED MODULAR VAULT



 **FICHET-BAUCHE**
The world's number one safe maker.

 CLASS M

 CLASS 1



Nearly 200 years ago, Fichet was the locksmith and safemaker of the kings of France. Today, after many years and several mergers and acquisitions, the FICHET-BAUCHE GROUP has become the European leader in the field of security.

In North America, several FICHET-BAUCHE owned warehouses/service centers back up a nationwide network of more than 50 direct distributors. This organization enables FICHET-BAUCHE, the world's number one safe maker, to offer a unique combination of new world service and old world experience.

Among the most recent products of FICHET-BAUCHE's experience and expertise are the U.L. Listed Class M and Class I Modular Vaults.



FICHET-BAUCHE'S U.L. LISTED CLASS M & I MODULAR VAULTS provide a high security level of protection for the storage of large quantities of valuables.

These modular vaults save space and are flexible. They replace the old generation of poured concrete vaults that cannot be expanded or relocated after the initial installation.

Because of their weight advantage, they can be installed in many buildings where a poured vault could not have been built.

The FICHET-BAUCHE modular vault concept allows for easy installation or dismantling in a matter of hours. Panels are bolted together. This makes expansion or relocation much easier than with commonly used welded panels. Consequently, these vaults are particularly suitable for installation in rented premises.



U.L. TESTS CLASS M & CLASS I

FICHET-BAUCHE's modular vaults successfully passed Underwriters Laboratories tests. They withstood attacks on both panels and doors with sophisticated tools such as:

- sledge & electric hammers,
- oxy-acetylene torches coupled with a flux rod,
- coring machine with carbide tips.

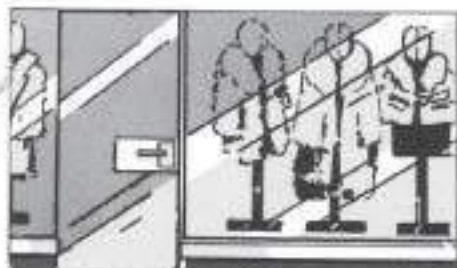
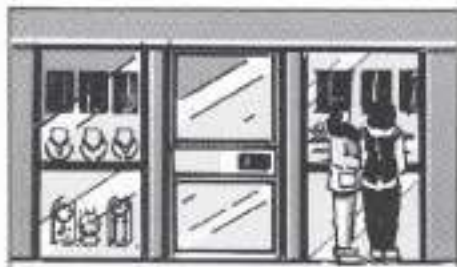
Using these powerful tools, testers tried to make a 96 square inch opening in both doors and panels and failed.

In addition, several attempts to defeat the boltwork and to release the locking mechanisms of the vault doors proved unsuccessful.

Though these tests were conducted by a very well trained and determined team of U.L. testers, FICHET-BAUCHE's doors and panels far surpassed the U.L. tests requirements.

They withstood more than 15 minutes of net attack time for the Class M label and more than 30 minutes of net attack time for the Class I.





FICHET-BAUCHE U.L. LISTED MODULAR VAULTS WILL FIT YOUR SPECIFIC REQUIREMENTS FOR HIGH SECURITY. Their modular design and protective features have many commercial and financial applications.

Commercial applications include jewelry stores and warehouses, jewelry manufacturing facilities, fur companies, etc.

Financial applications include credit unions, bank branch offices, brokerage firms, etc., just to name a few.

THE CLASS 1 MODULAR VAULT consists of a FICHET-BAUCHE OMEGA "1" vault door (refer to vault door literature) and 23" wide panels.

The special design of the panels enables them to be tightly interlocked so as to form a homogeneous "wall, floor and ceiling" unit.

The thickness of the Class 1 panels is 3 inches. The weight of each panel is approximately 770 lbs.

The inside protection of the panels is made of the special FICHET-BAUCHE C.H.D. agglomerate reinforced with **TORDBAR**.

C.H.D. is a ceramic-type agglomerate which is filled with millions of micro steel needles. These needles form a very close knit which keeps the agglomerate from cracking and/or breaking when attacked by a sledge or electric hammer. **C.H.D.'s** crushing strength is higher than 17,000 PSI and it also offers a very high torch and fire resistance.

TORDBAR is a strong-room type reinforcement made of steel flat bars which are cut into strips running off a central bar and then twisted into a spiral shape.



THE CLASS M MODULAR VAULT consists of a FICHET-BAUCHE OMEGA "M" vault door (refer to vault door literature) and 23" wide panels.

The thickness of the Class M panels is 3 inches. The weight of each panel is approximately 660 lbs.

The inside protection of the panels is made of the special FICHET-BAUCHE **DRA-AGGAMIX** agglomerate reinforced with **TORDBAR**.

DRA-AGGAMIX is an extra-hard and abrasive fire resistant agglomerate filled with metallic reinforcements. It provides very high resistance to the most powerful mechanical tools as well as very high torch and fire resistance. **DRA-AGGAMIX's** crushing strength is higher than 8,000 PSI.



Nearly 200 years ago, Fichet was the locksmith and safemaker of the kings of France. Today, after many years and several mergers and acquisitions, the FICHET-BAUCHE GROUP has become the European leader in the field of security.

In North America, several FICHET-BAUCHE owned warehouses/service centers back up a nationwide network of more than 50 direct distributors. This organization enables FICHET-BAUCHE, the world's number one safe maker, to offer a unique combination of new world service and old world experience.

Among the most recent products of FICHET-BAUCHE's experience and expertise are the U.L. Listed Class M and Class I Modular Vaults.



FICHET-BAUCHE'S U.L. LISTED CLASS M & 1 MODULAR VAULTS provide a high security level of protection for the storage of large quantities of valuables.

These modular vaults save space and are flexible. They replace the old generation of poured concrete vaults that cannot be expanded or relocated after the initial installation.

Because of their weight advantage, they can be installed in many buildings where a poured vault could not have been built.

The FICHET-BAUCHE modular vault concept allows for easy installation or dismantling in a matter of hours. Panels are bolted together. This makes expansion or relocation much easier than with commonly used welded panels. Consequently, these vaults are particularly suitable for installation in rented premises.



U.L. TESTS CLASS M & CLASS 1

FICHET-BAUCHE's modular vaults successfully passed Underwriters Laboratories tests. They withstood attacks on both panels and doors with sophisticated tools such as:

- sledge & electric hammers,
- oxy-acetylene torches coupled with a flux rod,
- coring machine with carbide tips.

Using these powerful tools, testers tried to make a 96 square inch opening in both doors and panels and failed.

In addition, several attempts to defeat the boltwork and to release the locking mechanisms of the vault doors proved unsuccessful.

Though these tests were conducted by a very well trained and determined team of U.L. testers, FICHET-BAUCHE's doors and panels far surpassed the U.L. tests' requirements.

They withstood more than 15 minutes of net attack time for the Class M label and more than 30 minutes of net attack time for the Class 1.

