



LOUIS XV AND DESIGNER SAFES



LOUIS XV 38



LOUIS XV 65



DESIGNER 3010



DESIGNER 4010



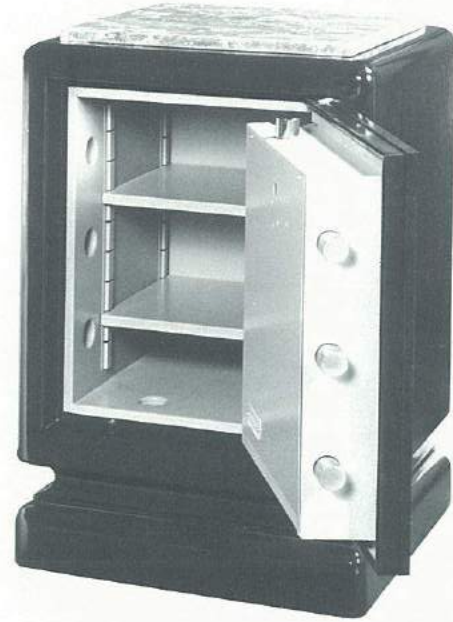
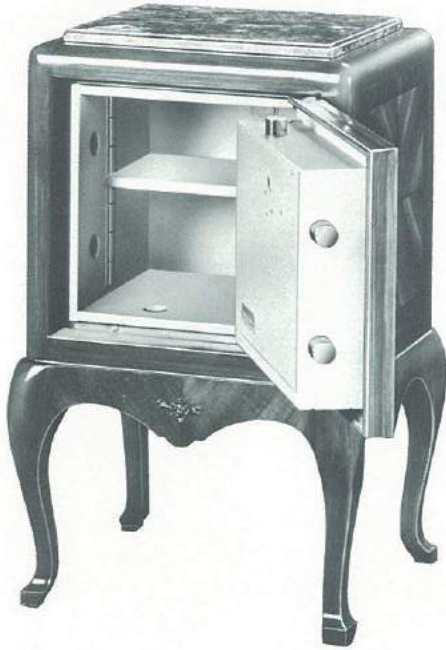
FICHET-BAUCHE
The world's number one safe maker.

LOUIS XV38
1.4 cu. ft.

LOUIS XV65
2.3 cu. ft.

DESIGNER 3010
2.3 cu. ft.

DESIGNER 4010
2.3 cu. ft.



LOUIS XV and DESIGNER safes provide high security protection that fits beautifully into traditional, exclusive surroundings. The finish, hand painted by factory-trained craftsmen, faithfully reproduces the appearance of the most expensive wood. These very attractive safes incorporate many of the same features and materials as other FICHET-BAUCHE high security safes.

CONSTRUCTION

The door and walls of the LOUIS XV and DESIGNER safes are over 3 inches thick. They are composed of AGGAMIX, an extra-hard and abrasive fire-resistant material, and an anti-drill, manganese steel plate.

In addition to burglary protection, the LOUIS XV and DESIGNER safes provide fire protection. The door jambs and frame of the door interlock to insure a perfect fit. The close fit insulates the inside of the safe against heat.

LOCKING SYSTEMS

Two independent locking systems and reloading devices are standard equipment on the LOUIS XV and DESIGNER series. The MONOPOLE key-lock, patented by FICHET-BAUCHE, is a maximum security pump lock which cannot be picked. It cannot be drilled without activating the reloading system.

A FICHET-BAUCHE manipulation-proof combination is also standard. This unique, European combination has 4 counters, each with 20 numbers, which are operated with the safe key. The combination is simple to use and can be changed easily.

Heavy, 1 1/4-inch bolts are controlled by the monopole key lock. In case of an attack on the locks or the safe, relockers are activated to freeze the bolts in place.

MODEL NUMBER	OUTSIDE			INSIDE			STORAGE CAPACITY	WEIGHT
	H	W	D	H	W	D		
LOUIS XV 38	38 1/2"	25 1/2"	20 1/2"	14 1/2"	16 1/2"	9 1/2"	1.4 cu. ft.	700 lbs.
LOUIS XV 65	43 1/2"	24 1/2"	22 1/2"	19 1/2"	16 1/2"	12 1/2"	2.3 cu. ft.	1,000 lbs.
DESIGNER 3010	32"	22 1/2"	21 1/2"	19 1/2"	16 1/2"	12 1/2"	2.3 cu. ft.	800 lbs.
DESIGNER 4010	33"	22 1/2"	20"	19 1/2"	16 1/2"	12 1/2"	2.3 cu. ft.	825 lbs.

Our aim is to constantly improve our products; we therefore reserve the right to alter specifications without prior notice.

Distributed By: _____