

The "Chatel" range
of safes by
Fichet-Bauché



provided with a system of double pivots



880

Capacity: 880 litres, 31.5 cu. ft

Approximate weight: 2,100 kg

Inside measurements in mm:

height: 1,660 - width: 1,020 - depth: 510 across shelves

Overall outside dimensions in mm:

height: 1,870 - width: 1,210 - depth: 830 overall

Door clearance in mm:

height: 1,660 - width: 1,020

Standard interior fittings: 5 removable shelves

Number of bolts:

right-hand door: 2 top bolts - 5 side bolts - 1 bottom bolt

1 security bolt operated by "Monopole" key

left-hand door: 4 spring-bolts operated by the door handle
and blocked by closure of the right-hand door





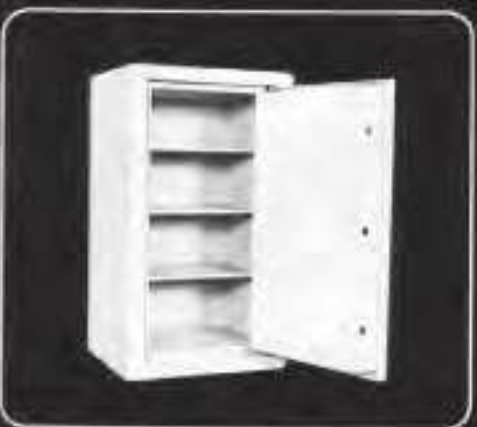
109

Capacity: 110 litres, 4 cu. ft.
Approximate weight: 635 kg
Inside measurements in mm:
height: 655 - width: 455 - depth: 360 across shelves
Overall outside dimensions in mm:
height: 865 - width: 660 - depth: 680 overall
Door clearance in mm:
height: 655 - width: 455
Standard interior fittings: 2 removable shelves
Number of bolts:
2 top bolts - 2 side bolts - 1 bottom bolt
1 security bolt operated by "Monopole" key



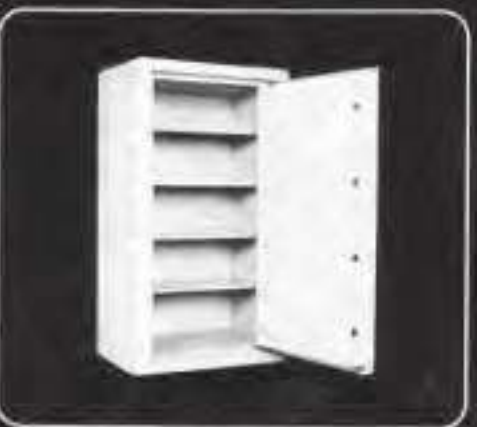
182

Capacity: 182 litres, 6.5 cu. ft.
Approximate weight: 845 kg
Inside measurements in mm:
height: 830 - width: 510 - depth: 420 across shelves
Overall outside dimensions in mm:
height: 1,040 - width: 715 - depth: 740 overall
Door clearance in mm:
height: 830 - width: 510
Standard interior fittings: 2 removable shelves
Number of bolts:
2 top bolts - 2 side bolts - 1 bottom bolt
1 security bolt operated by "Monopole" key



305

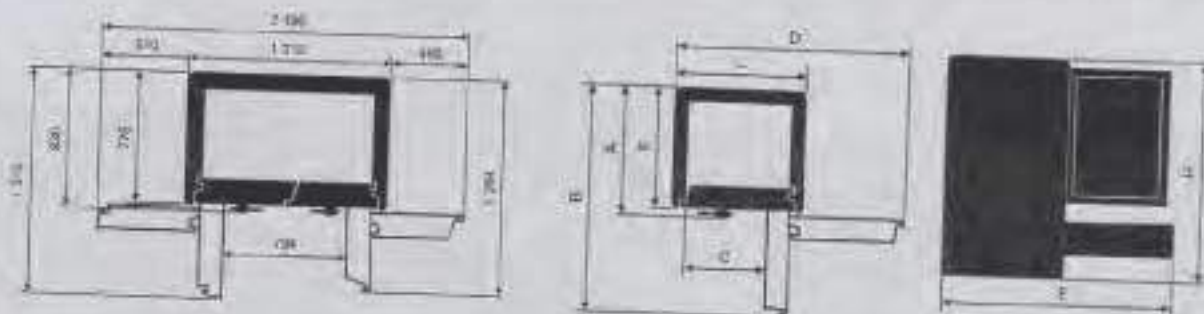
Capacity: 304 litres, 11 cu. ft.
Approximate weight: 1,180 kg
Inside measurements in mm:
height: 1,180 - width: 600 - depth: 420 across shelves
Overall outside dimensions in mm:
height: 1,390 - width: 805 - depth: 740 overall
Door clearance in mm:
height: 1,180 - width: 600
Standard interior fittings: 3 removable shelves
Number of bolts:
2 top bolts - 3 side bolts - 1 bottom bolt
1 security bolt operated by "Monopole" key



471

Capacity: 471 litres, 17 cu. ft.
Approximate weight: 1,450 kg
Inside measurements in mm:
height: 1,480 - width: 740 - depth: 420 across shelves
Overall outside dimensions in mm:
height: 1,690 - width: 945 - depth: 740 overall
Door clearance in mm:
height: 1,480 - width: 740
Standard interior fittings: 4 removable shelves
Number of bolts:
2 top bolts - 4 side bolts - 1 bottom bolt
1 security bolt operated by "Monopole" key

OUTSIDE DIMENSIONS



Model	Height	Width	Depth	A	B	C	D	E
108	865 mm 34"	660 mm 26"	628 mm 24 3/4"	680 mm 26 3/4"	1100 mm 43 1/4"	305 mm 12"	1106 mm 43 1/2"	
109 (on plinth)	1215 mm 47 5/8"	660 mm 26"	628 mm 24 3/4"	680 mm 26 3/4"	1100 mm 43 1/4"	305 mm 12"	1106 mm 43 1/2"	1118 mm 44 1/2"
182	1040 mm 41"	715 mm 28 1/8"	685 mm 27"	740 mm 29 1/8"	1215 mm 47 6/8"	363 mm 14 1/4"	1216 mm 47 1/2"	
182 (on plinth)	1380 mm 54 3/4"	715 mm 28 1/8"	685 mm 27"	740 mm 29 1/8"	1215 mm 47 6/8"	363 mm 14 1/4"	1216 mm 47 1/2"	1233 mm 48 1/2"
305	1390 mm 54 3/4"	805 mm 31 3/4"	683 mm 27"	740 mm 29 1/8"	1305 mm 51 3/8"	353 mm 13 7/8"	1388 mm 55"	
471	1690 mm 66 1/2"	945 mm 37 1/4"	685 mm 27"	740 mm 29 1/8"	1445 mm 56 7/8"	593 mm 23 1/2"	1678 mm 66"	
860	1870 mm 75 5/8"	1210 mm 47 5/8"	778 mm 30 5/8"					

* See sketch above

TECHNICAL DATA

Model	Outside dimensions			Inside dimensions			Capacity	Weight
	Height	Width	Depth	Height	Width	Depth		
108	865 mm 34"	660 mm 26"	628 mm 24 3/4"	655 mm 25 3/4"	466 mm 17 7/8"	360 mm 14 1/4"	110 l 4 cu. ft.	635 kg 12.5 cwt.
109 (on plinth)	1215 mm 47 5/8"	660 mm 26"	628 mm 24 3/4"	655 mm 25 3/4"	450 mm 17 7/8"	360 mm 14 1/4"	110 l 4 cu. ft.	680 kg 13.5 cwt.
182	1040 mm 41"	715 mm 28 1/8"	740 mm 29 1/8"	830 mm 32 5/8"	510 mm 20"	420 mm 16 1/2"	182 l 6.5 cu. ft.	845 kg 18.5 cwt.
182 (on plinth)	1380 mm 54 3/4"	715 mm 28 1/8"	740 mm 29 1/8"	830 mm 32 5/8"	510 mm 20"	420 mm 16 1/2"	182 l 6.5 cu. ft.	895 kg 19 cwt.
305	1390 mm 54 3/4"	805 mm 31 3/4"	740 mm 29 1/8"	1180 mm 46 1/2"	600 mm 23 5/8"	420 mm 16 1/2"	304 l 11 cu. ft.	1180 kg 23 cwt.
471	1690 mm 66 1/2"	945 mm 37 1/4"	740 mm 29 1/8"	1480 mm 58 1/4"	740 mm 29 1/8"	420 mm 16 1/2"	371 l 13 cu. ft.	1450 kg 28.5 cwt.
860	1870 mm 75 5/8"	1210 mm 47 5/8"	830 mm 32 5/8"	1690 mm 66 3/8"	1020 mm 40 1/2"	310 mm 12"	880 l 31.5 cu. ft.	2160 kg 47 cwt.

DIMENSIONS OF INNER CUPBOARDS*

Model	External dimensions			Internal dimensions				N° of doors	Weight
	Height	Width	Depth	Height	Width	Depth			
108	224 mm 8 3/4"	445 mm 17 1/2"	339.5 mm 13 3/8"	184 mm 7 1/4"	384 mm 15 1/4"	315 mm/door 12 5/8" door	274 mm/lock 10 3/4" lock	1	15 kg 0.32 cwt.
182	224 mm 8 3/4"	530 mm 20 7/8"	395.5 mm 15 5/8"	184 mm 7 1/4"	452 mm 17 7/8"	376 mm/door 14 1/4" door	334 mm/lock 13 1/8" lock	1	18 kg 0.39 cwt.
305	224 mm 8 3/4"	590 mm 23 1/4"	399.5 mm 15 3/4"	184 mm 7 1/4"	543 mm 21 3/8"	376 mm/door 14 1/4" door	324 mm/lock 12 1/8" lock	1	33 kg 0.40 cwt.
471	224 mm 8 3/4"	730 mm 28 3/4"	399.5 mm 15 3/4"	184 mm 7 1/4"	863 mm 26 7/8"	376 mm/door 14 1/4" door	334 mm/lock 13 1/8" lock	1	24 kg 0.50 cwt.
860	224 mm 8 3/4"	1005 mm 39 3/4"	469.5 mm 18 1/2"	184 mm 7 1/4"	854 mm 33 1/2"	466 mm/door 18 3/8" door	424 mm/lock 16 3/4" lock	2	37 kg 0.75 cwt.

* These can be fitted to all types and are equipped with "Monobloc" locks

Rational security equipment.

The CHATEL range has been planned and designed by Fichet-Bauche to provide rational security equipment for incorporation into a more comprehensive system of protection (including, for example, electronic alarms) which will depend on the level of risk specified by the security officer. Fichet-Bauche specialists are available to assist him in assessing the situation.

Factors affecting the choice of safe

The ability of a safe to withstand the efforts of potential thieves is a quality which it is particularly hard to define. The tools used to violate safes are highly varied and include:

- mechanical tools, e.g. drills, wedges, disc cutters and jacks,
- thermal equipment (oxyacetylene cutters), and
- explosives.

Apart from this, the client has to bear a wide range of factors in mind when choosing an appropriate safe, for instance:

- the importance of the articles to be kept in the safe,
- the place in which the safe is to be installed, and
- any additional security provided by the surroundings.

Fichet-Bauche know-how

Besides the armour-plating to withstand attacks by modern portable drills, the walls of CHATEL safes are constructed to resist stubbornly and retard the effects of thermal equipment such as oxyacetylene cutters.

The design, security, layout and diversity of the various parts making up the locking mechanism of CHATEL safes are the outcome of Fichet-Bauche know-how gained from 150 years of professional experience.

The pleasing appearance of the CHATEL range has been one of our prime concerns.

The doors, which are mounted on inside pivots, swing open to a full 180°. They are, in fact, provided with a system of double pivots.



High-security locking mechanisms.



combination lock, handle and position of the keyhole

Fichet-Bauche are one of the few safe manufacturers in the world who design and make all their lock mechanisms and combinations. This fact, in itself, is a prime guarantee of reliability and independence.

The basic version of the CHATEL safe is equipped with the following locking devices:

The main key lock

This "Monopole" lock is precision-made and is operated by a circular 8-lever key which is neither marked nor capable of imitation. The locking mechanism is made to suit its own specific key.

The combination lock

The "Monocommande" combination lock provides the virtually inexhaustible possibilities of 63 million actual combinations. The device, which is extremely simple to use, has been designed to frustrate any attempt to establish the combination illicitly by "feel".

Should any attempt be made on the door or the locking mechanism with thermal or mechanical equipment, or with explosives, a number of relocking devices, which are kept in a state of permanent readiness, are shot home and block the door securely in the closed position, additionally live relocking devices go into operation each time the door is locked.

The double-purpose handle

The handle comprises a moving part for operating the bolts and a fixed part for opening and closing the door.

If requested, other locking mechanisms can be fitted to this range of safes.



The Fichet-Bauche "Monopole" key

Every design feature gives that added security.

The few examples which we give below are only intended to illustrate some of the points which are vital to the effectiveness of a safe. It is wrong to think that this effectiveness lies merely in the strength of the walls.

The interlocking grooves

The doors and bodies of CHATEL safes are provided with recessed sections designed to interlock when the door is closed. This arrangement gives additional protection against fire and helps to frustrate any attempt to separate the door from the body of the safe.

The sliding bolts

All the bolts fitted to CHATEL safes have a sliding mechanism which greatly increases the ability of the safes to withstand the tractive forces exerted when attempts are made to pull the door away from the body.

The time lock

From model 182 upwards, safes can be fitted with time locks which prevent them from being opened for periods up to 160 hours at the client's wishes.

Fixing

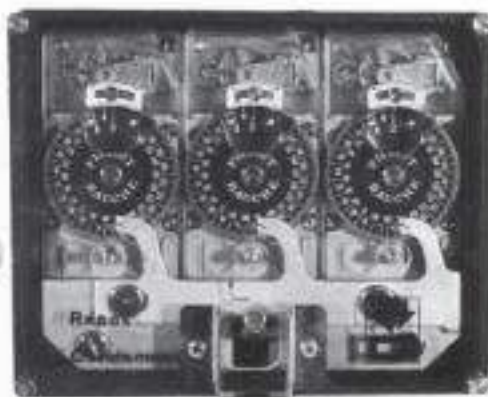
Normally, all CHATEL safes are provided with holes in the base of the safe to accommodate fixing bolts.

Inside alarm system

The fitting of an inside alarm system can be performed as a standard operation without any difficulty.

Deposit facilities

A deposit drawer (side or rear entry) is available on CHATEL 182 - 305 - 471 sizes.



The Fichtel-Bauche time lock.

Effective protection against theft and fire.



The CHATEL safe placed in a furnace and...



tested for 60 minutes up to 925°C.



which kept its documents intact.

Fichet-Bauche, who keep abreast of the new techniques and styles employed by thieves throughout the world, incorporate in their safes a number of protective features which greatly impede the efforts of the safebreaker. The CHATEL safes represent one of the results of this constant research combined with Fichet-Bauche's long experience in this particular field.

Double protection

The essential purpose of a safe is to protect its contents against theft. At the same time, it should also afford adequate protection in case of fire. CHATEL safes do provide this additional safeguard.

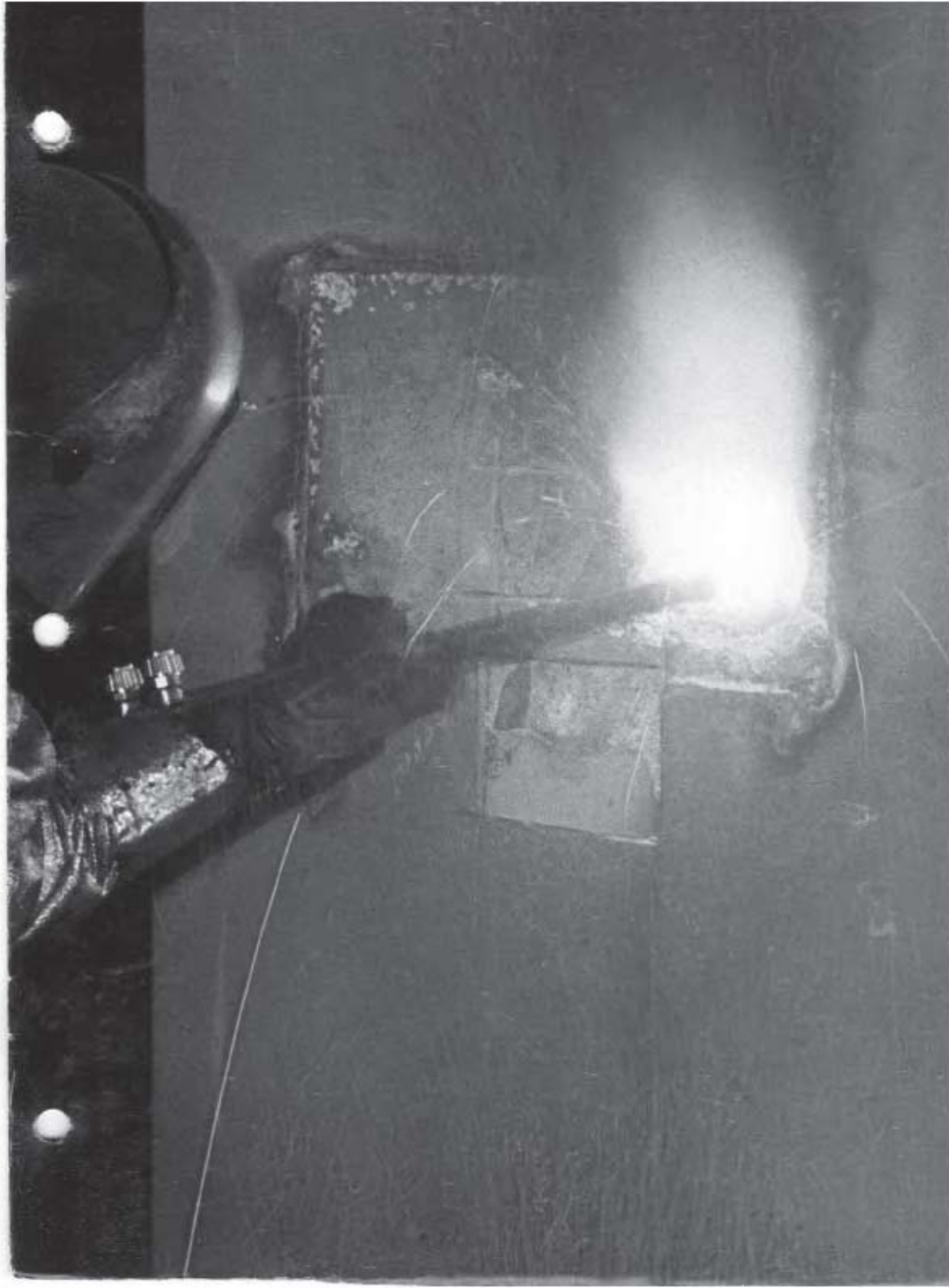
Testing resistance to fire

On 15th February, 1977, a CHATEL 305 safe successfully underwent a test of its resistance to fire carried out by the Scientific and Technical Centre for Building Construction (C.S.T.B.) in Champs-sur-Marne.

In this test, papers are placed inside the safe which is then bolted and heated in a furnace for a period of 60 minutes up to a temperature of 925 °C. Remember that paper ignites spontaneously at 177 °C, even when not in contact with an open flame.

A conclusive test

The protection against fire provided by Fichet-Bauche was shown to be effective. During this test, the inside temperature of the CHATEL safe did not rise above 100 °C. The documents placed inside were recovered intact.



AVAILABLE UPON REQUEST: SAFES ON PLINTH

109



182



For further information apply to:



FICHET-BAUCHE

FICHET-BAUCHE Head office
15-17 avenue Marone-Saulnier
78141 Vélizy-Villacoublay Cedex
Tel. (3) 946 96 44
Telex 697 389 F.

Due to its continuous increase in products, we therefore reserve the right to the specification without prior notice.

AVAILABLE UPON REQUEST: SAFES ON PLINTH

109



182



For further information apply to:



FICHET-BAUCHE

FICHET-BAUCHE Head office
15-17 avenue Marone-Saulnier
78141 Vélizy-Villacoublay Cedex
Tel. (33) 946 96 44
Telex 697 389 F.

Due to its continuous increase in products, we therefore reserve the right to the specification without prior notice.

The "Chatel" range

of safes by

Fichet-Bauche



provided with a system of double pivots