



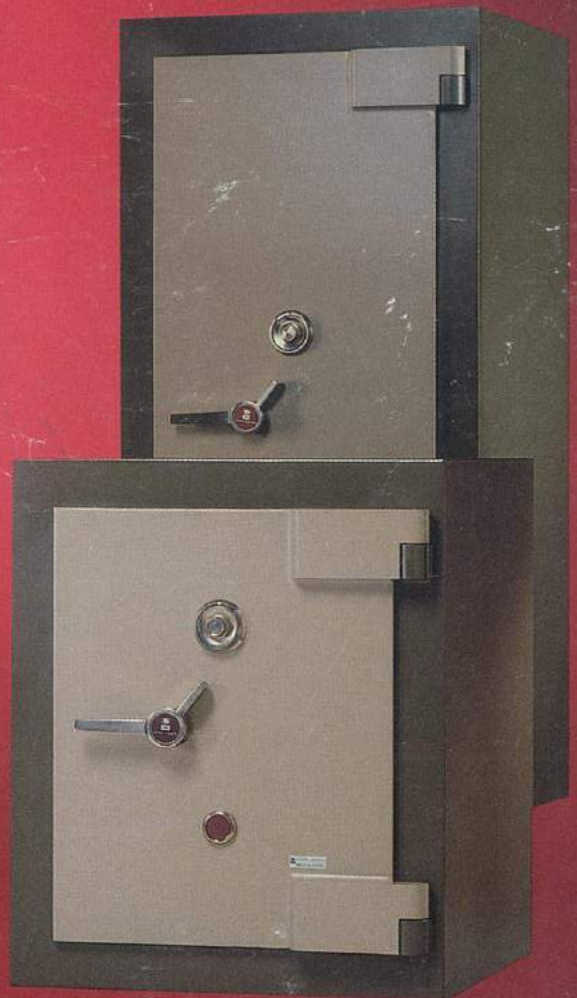
BASTILLE DIAMOND SAFES

Bastille 593



U.L.-LISTED
TRTL 30 × 6

Bastille 367



Bastille 236

Bastille 170



FICHET-BAUCHE
The world's number one safe maker.

MODEL 170
6.0 cu. ft.

MODEL 236
8.3 cu. ft.

MODEL 367
13.0 cu. ft.

MODEL 593
21.0 cu. ft.



Nearly 200 years ago, Fichet was the locksmith and safemaker of the kings of France. Today, after many years and several mergers and acquisitions, the FICHET-BAUCHE GROUP has become the European leader in the field of security.

In North America, several FICHET-BAUCHE owned warehouses/service centers back up a nationwide network of more than 50 direct distributors. This organization enables FICHET-BAUCHE, the world's number one safe maker, to offer a unique combination of new world service and old world experience.

Among the most recent products of FICHET-BAUCHE's experience and expertise is the BASTILLE line of U.L.-listed TRTL 30 x 6 safes.



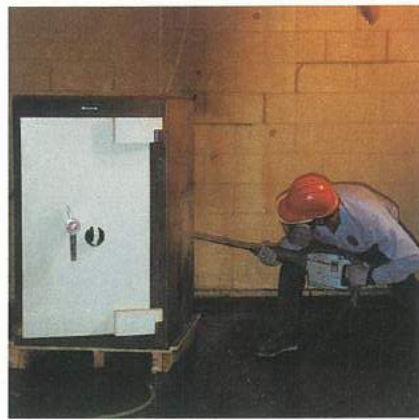
Industrial and commercial establishments face serious threats from professional burglars.

Retailers and manufacturers with high-risk inventories, financial institutions and other companies with valuable merchandise are the main targets of professional burglars.

These criminals are sophisticated in the use of numerous, powerful weapons, including:

- Mechanical tools like carbide- and diamond-tipped drills, impact hammers, diamond grinders, jacks, etc.
- Thermal devices like oxyacetylene torches and lances.
- Explosives.

When the incentives are high, burglars will not hesitate to spend weeks evaluating the risks and setting up a powerful set of resources for the job.



FICHET-BAUCHE has used its long experience with professional burglary to design the BASTILLE line of safes.

When perimeter security systems like alarms or security guards are bypassed, safes become the last line of defense.

The BASTILLE has been designed to resist the most formidable mechanical, torch or explosive attacks. Its massive defense barriers, powerful boltwork and sophisticated locking mechanisms enable the BASTILLE to be the center of a physical security system.

The BASTILLE will protect priceless, high risk inventories against professional burglars.

Burglary protection alone is not enough. The BASTILLE, like all other FICHET-BAUCHE high security safes, is designed to provide fire protection as well as burglary protection.

The fire test consists of placing a safe in a furnace heated to 1700°F. for one hour. The temperature inside the safe must remain below 350°F and the documents inside must be recovered intact.



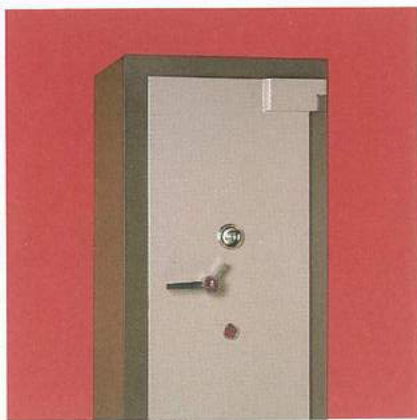
The BASTILLE has passed demanding torch and tool tests conducted by the experts at the Underwriters' Laboratories (U.L.).

These experts use the most powerful carbide- or diamond-tipped drills, impact hammers, oxyacetylene torches and other tools to try to make a very small opening in the safe. They attack the door, the door jamb and all six sides of the safe.

In addition, several attempts are made to defeat the boltwork and release the locking mechanisms. The testers try to punch, drill and pick the locks and cut through the bolts.

The BASTILLE resisted all these attacks and was granted the most demanding TRTL 30 x 6 rating.





Construction: The BASTILLE's massive composite defense barriers offer the highest protection.

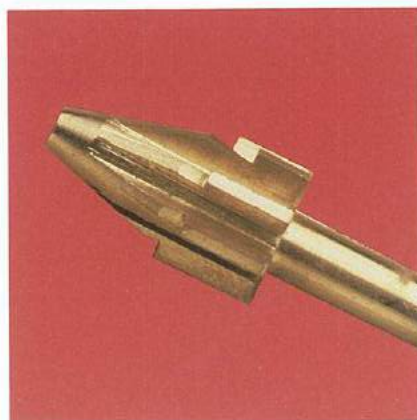
The body is more than 5 1/2 inches thick and features a new FICHET-BAUCHE high resistance matrix sandwiched between two heavy steel plates. This matrix is composed of two exclusive FICHET-BAUCHE materials, DRA-AGGAMIX and METAK.

DRA-AGGAMIX is an extra-hard and abrasive fire-resistant agglomerate filled with metallic reinforcements. It provides very high resistance to the most powerful mechanical tools as well as very high torch and fire resistance.

METAK is a casting of high-grade aluminum alloy filled with angular nuggets of crystallized aluminum oxide with titanium. It provides extremely high resistance to oxyacetylene cutting torches. The nuggets are impossible to drill.

The BASTILLE'S door is over 8 inches thick, with a defense barrier of over 5 1/2 inches identical in construction to the body of the safe. In addition, special reinforcements protect the bolts and the strategic parts of the locking mechanism.

The door jambs are further protected by a double frame of pure copper 5 inches wide. The conical profiles of the jambs insure a perfect, close fit of the door.



The BASTILLE provides maximum security with two separate, independent, high security locks, a powerful boltwork and a multiple-action relocking system.

□ The BASTILLE's standard combination lock is a maximum security, U.L.-listed Group I, manipulation-proof lock with one million possible combinations.

□ A MONOPOLE keylock is standard as the second independent lock. Patented by FICHET-BAUCHE, this lock is a maximum security pump lock which cannot be picked. It cannot be drilled without activating the relocking system. Its unique key is undecipherable, anonymous and cannot be reproduced except at factory owned locations.

□ The boltwork assembly is made of strong, chrome-plated steel plates and provides a three-way bolt-throwing action, engaging heavy, 1 1/2-inch bolts into the body of the safe. Fixed bolts on the hinged side of the door serve as an additional locking system.

□ Thermal and mechanical relockers connected to a glass nerve center activate relocking bolts in case of an attack. When activated, the relocking bolts are further protected by spring-loaded cross pins which freeze the relocking bolts in the locked position.



The BASTILLE combines strength, practicality and good looks.

The door opens a full 180 degrees for easy accessibility. A special latch mechanism keeps the bolts in the retracted position when the door is open to prevent closing the door with the bolts out. Adjustable, removable shelves are standard equipment. Four sizes, ranging from 6 to 21 cubic feet in capacity, are available to cover a wide range of uses and applications.

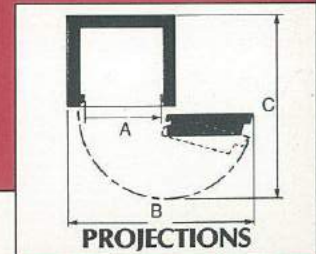
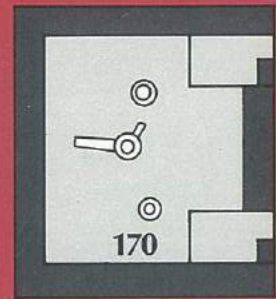
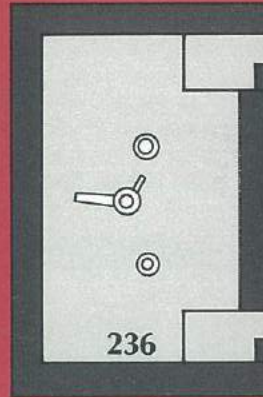
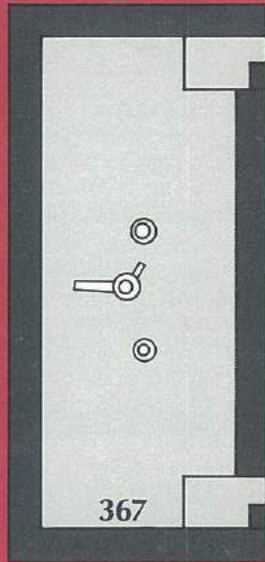
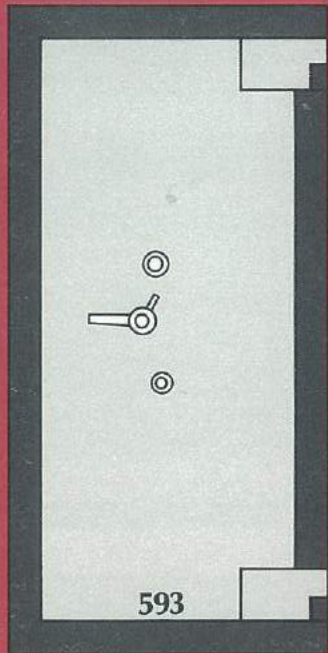
The BASTILLE's finish, smooth and matte, is of the highest quality to do justice to the FICHET-BAUCHE name. The door is medium beige and the body chestnut brown.

Numerous options are available to complement the BASTILLE's standard equipment.

A second combination lock, time lock, hold-up deterrents or signaling devices, etc. can be added to the locking mechanism.

Several lockers, internal cabinets, etc. can be fitted as optional interiors.

BASTILLE SAFE SPECIFICATIONS



MODEL NUMBER	OUTSIDE			INSIDE			STORAGE CAPACITY	WEIGHT	PROJECTIONS		
	H	W	D	H	W	D			A	B	C
170	37"	31"	36"	26"	20"	20"	6.0 cu. ft.	2,650 lbs.	18"	55"	60"
236	47"	31"	36"	36"	20"	20"	8.3 cu. ft.	3,250 lbs.	18"	55"	60"
367	67"	31"	36"	56"	20"	20"	13.0 cu. ft.	4,400 lbs.	18"	55"	60"
593	78"	38"	36"	67"	27"	20"	21.0 cu. ft.	5,300 lbs.	25"	69"	67"

Our aim is to constantly improve our products; we therefore reserve the right to alter specifications without prior notice.

Fichet-Bauche Group, Headquarters:

Fichet-Bauche B.P. 11, 78141 Vélizy Cedex - France
 Phone (33)-3-946.96.44 Telex 697389F.

Worldwide Subsidiaries Outside U.S.A.

- Argentina
- Belgium
- Brazil
- Germany
- Ireland
- Italy
- Luxembourg
- Malaysia
- Portugal
- Spain
- Switzerland
- United Kingdom



Fichet-Bauche North America
 1255-A Oakbrook Drive, Norcross, Georgia 30093
 Phone: (404) 448-5593; (800) 241-2110
Branch Office/Warehouse
 465 Carmel Street, San Marcos, California 92069
 Phone: (619) 744-7110

Distributed By:

