

FICHET-BAUCHE

SAFES

BAR 11 - BAR 31

(AT 2)

(AT 3)



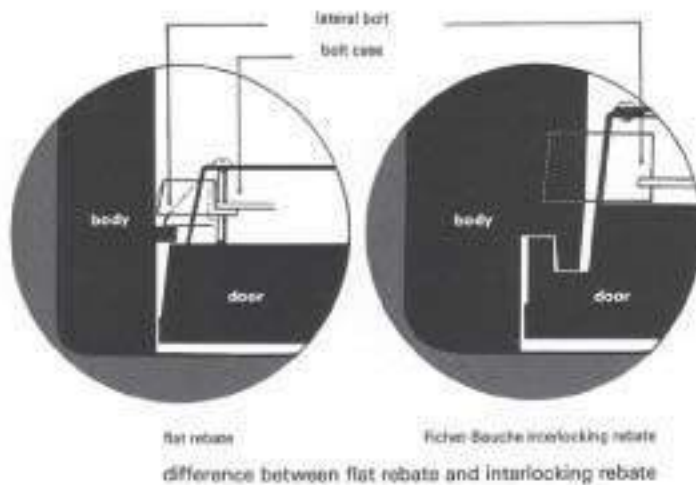
BAR 11/AT 2**BAR 31/AT 3**

model	outside dimensions			inside dimensions			volume	weight
	height	width	depth	height	width	depth		
BAR 11/AT2	520 20" 1/2	570 22" 1/2	445 17" 1/2	370 14" 1/2	425 18" 3/4	240 9" 1/2	1.32 cu.ft.	265 kg 5.1 cwt.
BAR 31/AT3	645 25" 1/2	570 22" 1/2	550 21" 3/4	495 19" 1/2	425 18" 3/4	310 12" 1/4	2.35 cu.ft.	345 kg 8.8 cwt.



The unique concealed double hinge allows the door to be opened to 180°, giving complete access to the full internal width of the safe.

Photograph showing how a BAR 31/AT3 safe has withstood an attack on the hinge side of the safe.



The Fichet-Bauché interlocking rebate provides a high degree of resistance to wedging and explosive attacks around the edge of the door, and acts as a barrier to heat and flame in fire conditions.

LOCKING

The door is secured with FICHET-BAUCHE MONOPOLE keylock and 4 tube combination lock (see back page) as standard locking, ensuring a high degree of internal security if the key is compromised.

3 way moving bolts engaging into recessed cups in the body plus continuous dog bolt ensure continuity of strength between safe door and body.

Relocking devices secure the boltwork independently in case of attack by explosives, mechanical tools or oxy acetylene cutting.

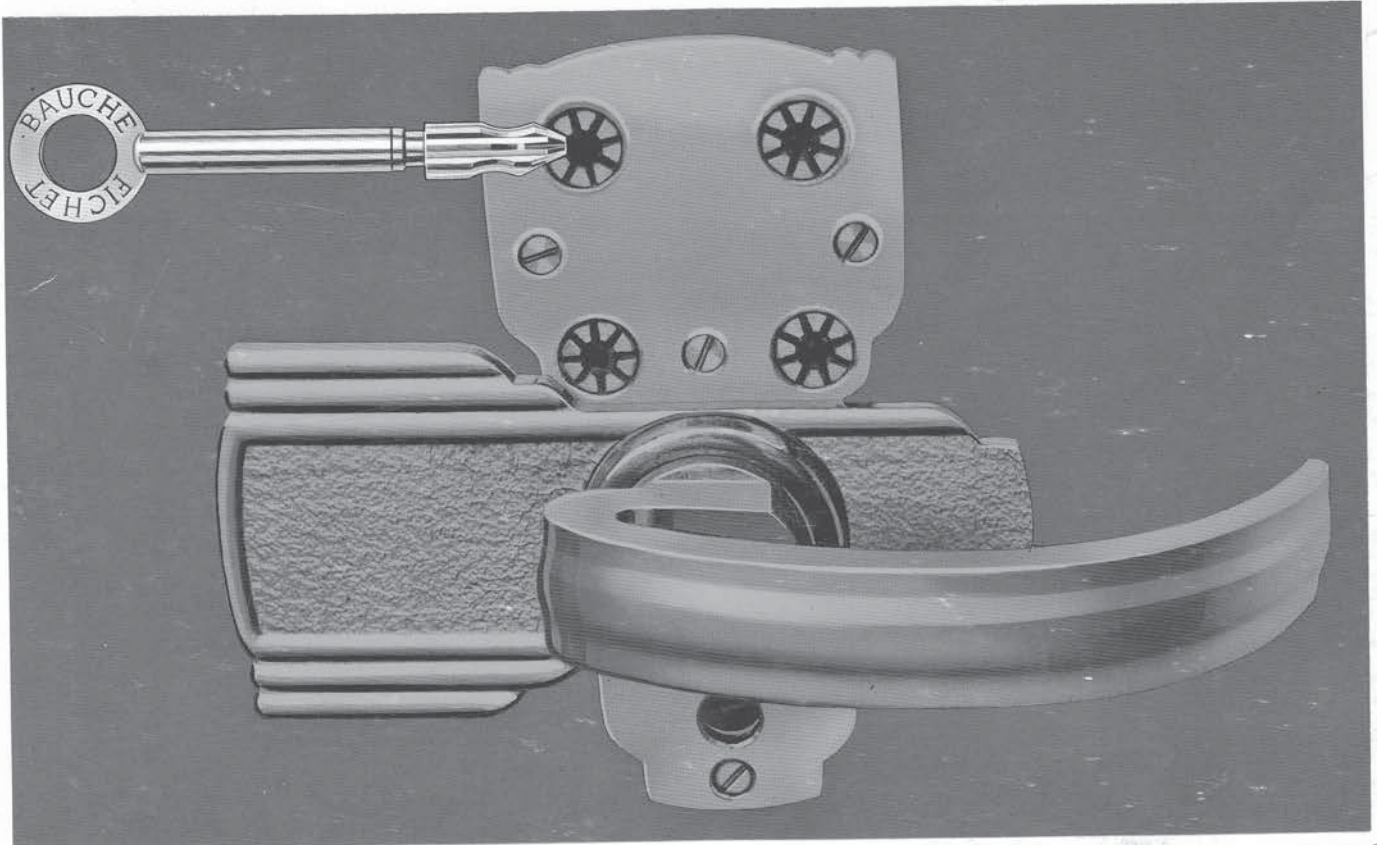
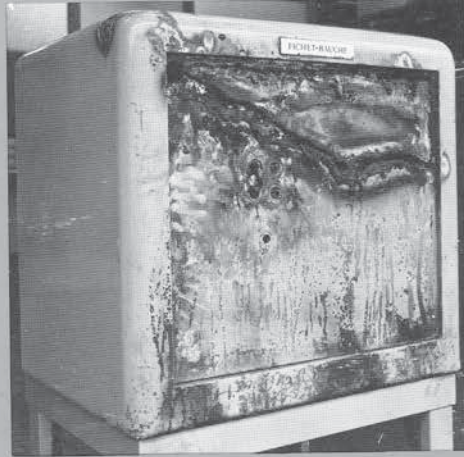
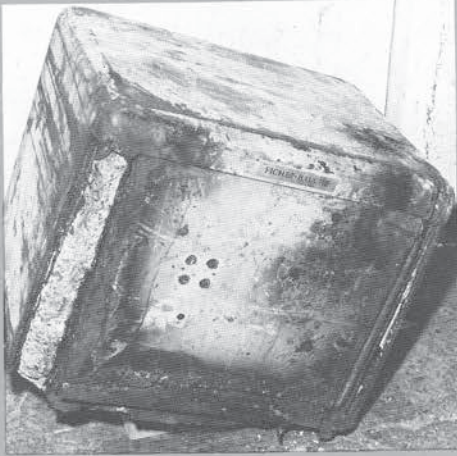
DOOR AND BODY

Thick inner and outer steel plates enclose an extra hard monolithic moulding resistant to oxy-acetylene together with drill resistant plates over all faces of safe, body and door.

Both safes are prepared with base fixing holes and are supplied with adjustable shelves.

HOW THEY RESIST

BAR II/AT 2 Safes which have withstood recent attacks.



FICHET-BAUCHE

Head office 15-17, avenue Morane-Saulnier
78140 Vélizy-Villacoublay
Tél. 946.96.44 Télex 697 389 F

Subsidiaries and after-sales service throughout Europe.

OUR AIM IS TO CONSTANTLY IMPROVE OUR PRODUCTS. WE THEREFORE RESERVE THE RIGHT TO ALTER THE SPECIFICATION WITHOUT PRIOR NOTICE.